

## Open Spaces 4

**Amenity Green Space in Willersey**

**What are they ?** (most commonly but not exclusively in housing areas) including informal recreation spaces, green spaces in and around housing, domestic gardens and village greens.

**What additional purpose can they serve ?** Informal activities close to home or work, biodiversity, environmental education and awareness

**Information from Willersey Parish Council**

There two main Amenity Green Spaces in Willersey 1) The Village Green and 2) The Recreation Ground. Greens are dotted around the village and have been marked on the map. We have treated these as one site as they are in similar condition and are maintained in the same way.

Typology	Quantity	Accessibility	Quality Summary
<b>Amenity Green Space</b>	1) 2057m <sup>2</sup> /0.2057 Ha	1) Public Access	X - Sites are in good condition
1) The Village Green	2) 14011.06m <sup>2</sup> /1.401106 Ha	2) Public Access	X - Volunteer (1)Staff involvement (2)
2) Recreation Ground.	3) 11207.27m <sup>2</sup> /1.120727 Ha	3) All have Public Access	X - None of the sites have a toilet
3) 8 other sites			X Disabled Access (1), (2), no
Total amount of accessible space		27,275m <sup>2</sup> / 2.7275 Ha	
Total amount of accessible space within 2km		NA	
Total amount of accessible space within 300m		27,275m <sup>2</sup> / 2.7275 Ha	

**Amenity Green Space Findings**

**Quantity, Size, Accessibility:** There are three main sites, 2.7275 Ha in size, all have public access.

**Quality:** All of the sites are in good condition, they all have volunteer involvement The Village Greens mowed by volunteers and the Parish pay for mowing of recreation ground. There is disabled access to some of the village greens, but disabled access to the recreation ground is limited.

## 4 Open Spaces

### Parks & Gardens Willersey

There are no Parks & Gardens in Willersey, although the village green between Badsey Lane and Collin Lane contains a sports pitch, children's play facilities and public seating.

### Semi Natural and Natural Green Spaces in Willersey

**What are they?** They include publicly accessible woodlands, urban forestry, scrub, grasslands, commons, meadows), wetlands, open running water and wastelands.

**What additional purpose can they serve?** They can be spaces for recreation, but a clear distinction should be made between those natural spaces which are accessible to the public and those are not, as many sites can also be Key Wildlife Sites and Scientific Sites of Special Interest (SSSIs).

### Information from Willersey Parish Council

Until recently it has been let out for grazing. There are plans with the school will use it for a school forest project, with funding from the County Council.

Typology	Quantity	Accessibility	Quality Summary
<b>Semi Natural and Natural Green Spaces</b>  1) Site	2866m <sup>2</sup> / 0.2866 Ha	No public access	<b>Essential</b> - Cleanliness & maintenance Yes  E - footpaths. None  E - Natural Features. Yes  <b>Desirable</b> - Trees & shrubs. Yes  D - Dog walking area. No  D - Parking Facilities. No  D - Information & signage. None  D - Dog bins. No  X - Public access. No  X - Disabled access. No

## Open Spaces 4

Typology	Quantity	Accessibility	Quality Summary
			X - Staff or volunteer involvement. Yes - paid works
No Access -: TOTAL AMOUNT OF ACCESSIBLE SPACE - 00.00 Ha			

**Semi Natural and Natural Green Spaces Findings**

**Quantity, Size, Accessibility:** There is one site, it does not have public access, therefore it has not been measured.

**Quality:** Of the **Essential criteria**, the site has natural features and is clean and maintained. There are no footpaths. The site does not have public access therefore, none of the **Desirable criteria** or the new quality criteria are met.

**Country Parks Willersey**

There are no Country Parks in Willersey

**Green Corridors in Willersey**

**What are they?** They include river and canal banks, cycle ways and public rights of way as well as accessible green space in urban fringes.

**What additional purpose can they serve ?** Walking, cycling or horse riding, Leisure purposes or travel Opportunities for wildlife migration

**Information from Willersey Parish Council**

There are some brooks and public rights of way - please refer to the map

Typology	Quantity Standard (National Standards)	Accessibility	Quality Summary
<b>Green Corridors</b>  There are some Brooks	There is no requirement to set catchments for green corridors due to their linear nature.	Not used as paths	NA

## 4 Open Spaces

Typology	Quantity Standard (National Standards)	Accessibility	Quality Summary
Total amount of accessible space		15,728m	
Total amount of accessible space within 2km (2km radius)		15,728m (includes Public Rights of Way with 2km radius)	
Total amount of accessible space within 300m		NA	

**Quantity:** There is no requirement to set catchments for green corridors due to their linear nature. Willersey has 15,728m of Public Rights of Way within 2km radius. Accessibility and Quality were not accessed.

### Additional Questions & Answers:

- Are the open spaces you have sufficient to meet local need? **Yes**
- Do you plan to open any new facilities/open spaces in the near future? **No**
- Have you closed any open spaces in recent times? **No**
- Are any of your open spaces under threat from such factors as under use, a lack of finance for maintenance? **No**
- Does your Parish hold any certificates for its open spaces or take part in any national events for example Green Flag for its parks, Love Parks week or Britain in Bloom? **No**
- Any further general comments about open space provision in your area or the district as a whole?  
**Open space is plentiful and of a high standard for residents of the Parish. Like most villages these areas are informal rather than formal. The village lacks cycle paths to adjoining villages.**

### Other areas of Open Space

There are no other areas of Open Space in Willersey.

### Accessible Open Space in Willersey

The national standards ANGst (Accessible Natural Green Space) have been used as a basis to measure the size and distance of the Open Space typologies in each of the 17 settlements that are known to have public access.

For Willersey it was necessary to draw four, 300m circles to cover the main urban area and one 2km circle for the area.

The table below only counts sites that are available to the public. The type, number and size of the Open Space is logged. Then the sites are broken down into sites that are within the 300m and within 2km. To avoid counting a site twice if it is within the 300m zone it is not counted in the 2km zone.

## Open Spaces 4

Typology	Number & Size	Within 300m	Within 2km
Allotments	NA	NA	NA
Churchyards and Cemeteries	1 Site = 4303.49 m <sup>2</sup> / 0.430349 Ha	1 Site = 4303.49 m <sup>2</sup> / 0.430349 Ha	0
Amenity Green Space	2 main Sites & 8 smaller sites = 27275m <sup>2</sup> / 2.7275 Ha	2 main Sites & 8 smaller sites = 27275m <sup>2</sup> / 2.7275 Ha	0
Parks & Gardens	0	0	0
Semi Natural and Natural Green Spaces	NA	NA	NA
Country Parks	0	0	0
Green Corridors	NA	NA	NA
Other Green Spaces	NA	NA	NA
<b>Total = 31578.49m<sup>2</sup>/157849 Ha</b>	There are three main sites, none of the sites are outside 2km.  The accessible sites measure 31578.49m <sup>2</sup> /157849 Ha	There are three main & eight smaller sites within the 300m radius.  These sites measure 3.157849 Ha	NA

Requirement Location	Requirement Met?	Largest Site &
1 site 2 hectares 300m radius = Ha (The Recreation Ground)	No	14011.06m <sup>2</sup> /1.401106
1 site 20 hectares 2km radius =	No	NA

## 4 Open Spaces

By applying the open space standard, Willersey does not have a sufficient amount of Open Space within a 300m radius. There are various pockets of Amenity Green Space, but these are not large. The Open Space map identifies that there is no open space of a significant size in a 2km radius of the settlement.

### Recommendations/Actions in light of Evidence from Willersey Parish Council

#### Allotments:

- Monitor demand (by recording requests to the Parish Council) and support plans to increase provision where additional demand is identified.

#### Recommendations Cemetery and Churchyards:

- Continue to maintain the areas to their existing standard.

#### Amenity Green Spaces

- Continue to maintain the areas to their existing standard

#### Parks and Gardens:

- There are no Parks/Gardens in Willersey. Investigate the need and provision of one further.

#### Semi Natural and Natural Green Spaces:

There is one semi natural space in Willersey, but this does not have public access

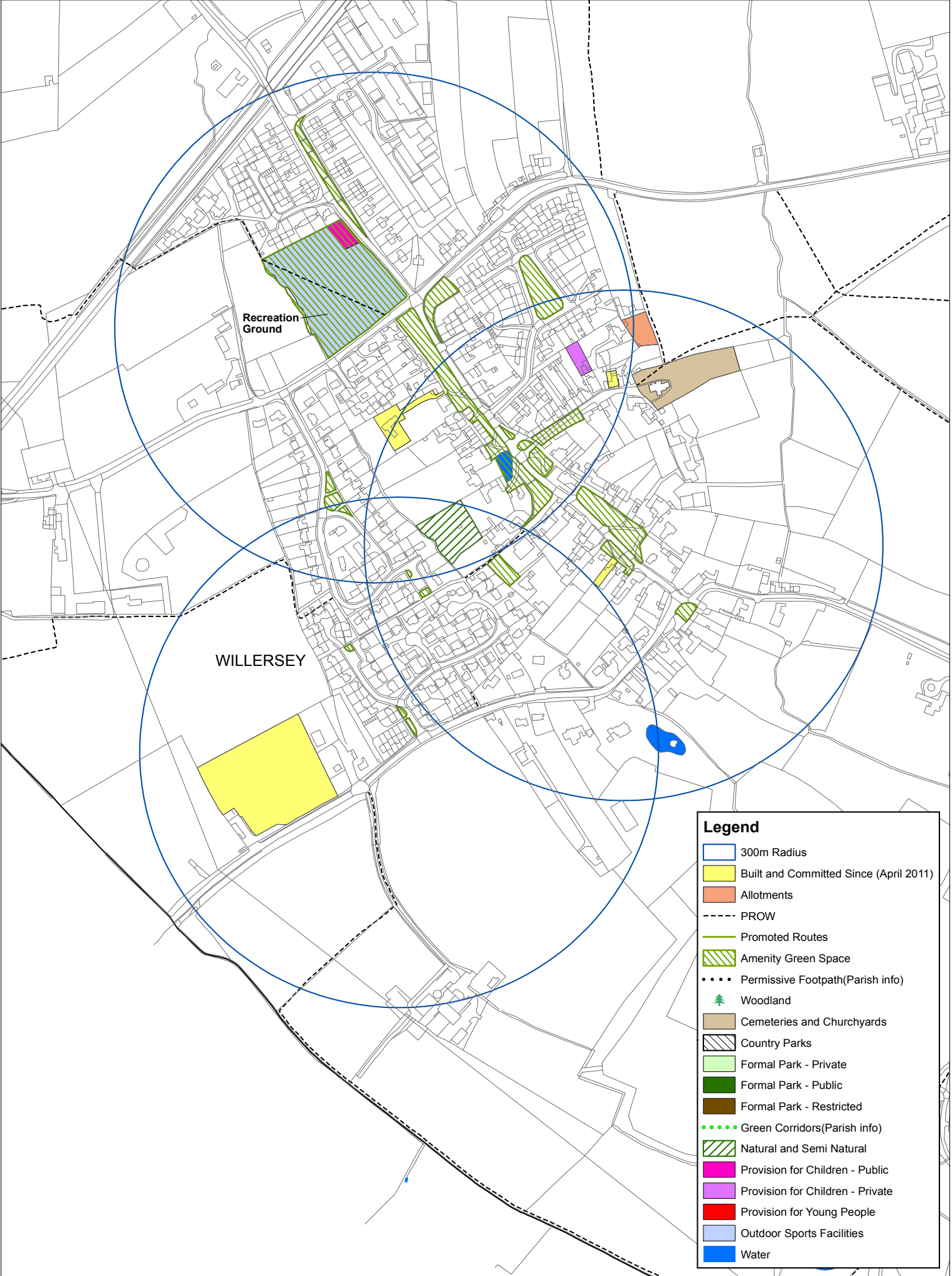
#### Country Parks:

- There are no Country Parks in the north of the Cotswold District.
- Investigate the provision of a Country Park in the north of the district

#### Popular Walks and Public Rights of Way/ Green Corridors:

- Continue to monitor use as demand is increased.
- Investigate the possibility of opening cycle paths to other nearby villages.

# WILLERSEY UPDATE 2016





WILLERSEY INFRASTRUCTURE 2017





## Open Spaces 4

### Mid Cotswold Sub-area

#### Town and Parish Surveys - overview of findings for Open Spaces in the Mid Cotswold sub-area

The Mid Cotswolds sub area contains five Principal Settlements, which are Andoversford, Bourton-on-the-Water, Northleach, Stow-on-the-Wold and Upper Rissington. A map of these settlements can be found at the end of this section, which shows the green 2km radius around the settlements that illustrates the wider area reviewed for the open spaces section of the strategy.

#### Allotments Findings

There are seven allotment sites within the five Principal Settlements. Provision is, on the whole, very good with the largest number of allotments located in Stow-on-the-Wold. However, there are no allotments at Andoversford. At the time of the survey the waiting lists for allotments was low, although all of the existing allotments were well used and cared for. The localised issues raised by the different settlements regarding allotments are covered in the individual sections for these settlements.

#### Allotments - Future Action

- Provide a new allotment in Andoversford.
- Provide new allotments in areas of demand.
- Continue to monitor and maintain existing allotments using the Open Space criteria for allotments.
- Where additional provision is found, make sure new sites are level with easily accessible footpaths.

#### Cemeteries and Church Yards

There are eight cemeteries and church yards in the Mid Cotswold sub-area three of which have closed. There is varying capacity remaining in each settlement. Overall, capacity within the settlements is believed to be reasonable. There were localised issues raised by each of the settlements regarding cemeteries and church yards, which are covered in the individual sections for these settlements.

#### Cemeteries and Church Yards - Future Action

- Continue to monitor and maintain existing Church Yards and cemeteries using the Open Space criteria for cemeteries and Church Yards.

#### Amenity Green Space

The amount of Amenity Green Space in the Mid Cotswold sub-area is varied. None of the parish or town councils highlighted any major issues regarding Amenity Green Space, any localised issues raised by the settlements are covered in each of the parishes individual sections.

#### Amenity Green Space - Future Action

- Investigate the possibility and need for creating more Amenity Green Spaces in all areas.
- Continue to monitor and maintain existing Amenity Green Spaces using the Open Space criteria for Amenity Green Spaces.

## 4 Open Spaces

### Parks and Gardens - Findings

There are no Parks/Gardens in any of the five settlements in the Mid Cotswold sub-area.

### Parks and Gardens - Future Action

- Investigate further the possibility and need for creating new parks in the five settlements and provide, where needed, new Parks/gardens in areas where new development is planned.

### Natural and Semi Natural Green Spaces

There are numerous Natural and Semi Natural Open Spaces with the Mid Cotswold sub-area. The largest Semi Natural Green Space in the Mid Cotswold sub-area is Grey Stone Farm Nature Reserve in Bourton-on-the-Water.

### Natural and Semi Natural Green Spaces – Future Action

- Look to increase the provision of natural and semi natural open space especially within 300m of each settlement as part of future Green Infrastructure provision.

### Country Parks – Findings

There are no Country Parks in the Mid Cotswold sub-area.

### Country Parks - Future Action

- Investigate further the possibility of providing a new Country Park in the Cotswolds

### Local Nature Reserves - Findings

There is one Local Nature Reserve in the Mid Cotswold sub-area, Greystones Farm Nature Reserve in Bourton-on-the-Water.

### Green Corridors and Walks – Findings

Within the seven Principal Settlements in the Mid Cotswold sub-area access to Green Corridors is mixed.

Public Rights of Way also serve as important Green Corridors. In a 2km radius of all of the five settlements there is a total of 110,160 metres of Public Rights of Way. However, the amount of Public Rights of Way between each of the five settlements varies considerably. Bourton-on-the-Water has 34,559m, whereas Stow-on-the-Wold has 9,056m within a 2km radius.

### Green Corridors and Walks – Actions

- Continue to monitor and maintain existing Green Corridors/Public Rights of Way using the Open Space criteria for Popular Walks and Public Rights of Way/ Green Corridors.
- Investigate the possibility of creating better links and circular walks in and around and to each of the settlements.

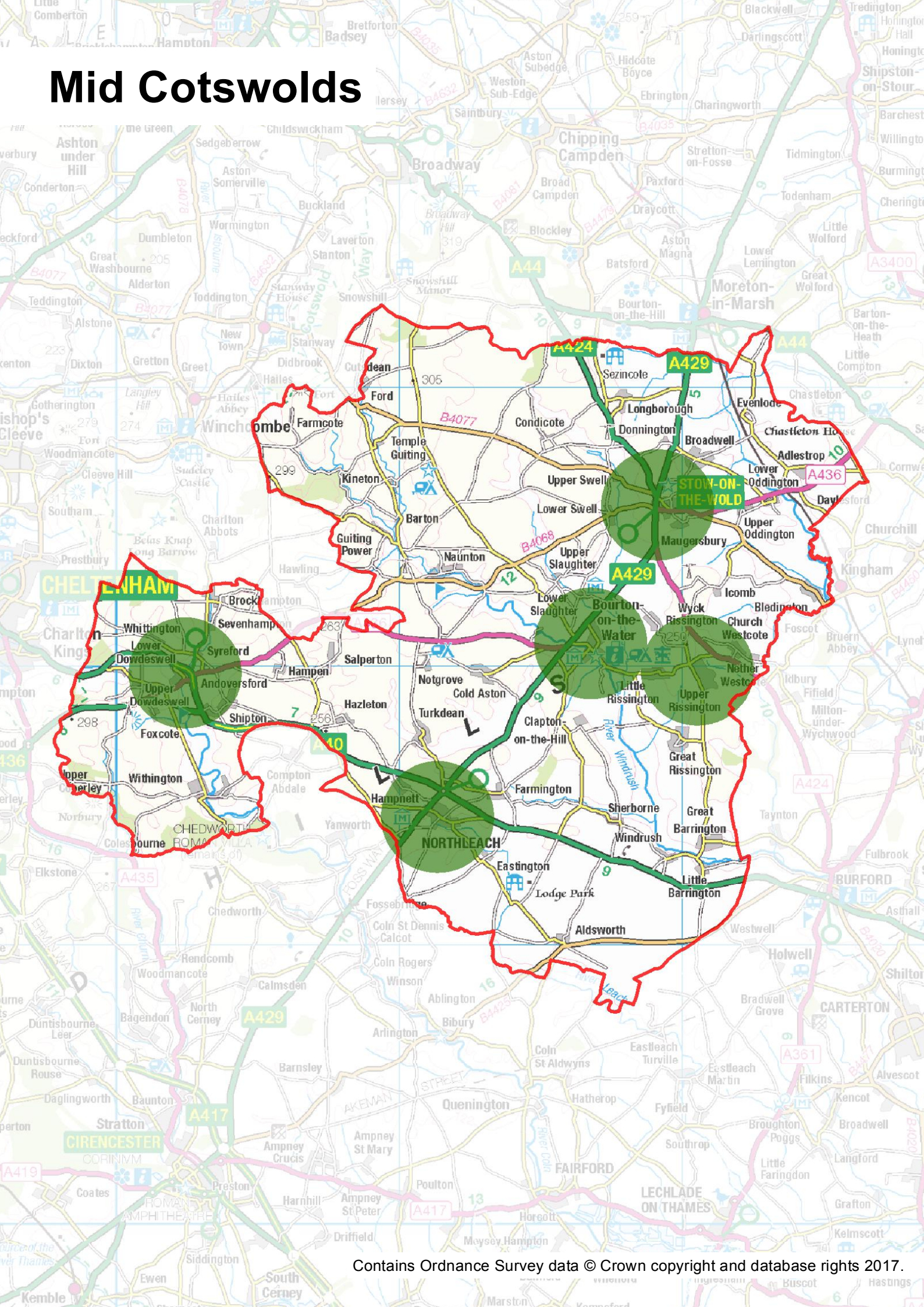
## Open Spaces 4

At the time of the initial research carried out for this study in 2015 much of Upper Rissington was under construction. Therefore, details regarding the amount of Open Space, allotments and other key features had not been finalised. Therefore, at this stage, a full assessment of the Open Spaces in Upper Rissington has not been undertaken. It is hoped that when the work for the Green Infrastructure commences, a review of the Open Spaces can be conducted at the same time.

A meeting with the Upper Rissington Parish Council in 2016 revealed two key issues regarding open space in the village. These were the need for greater access to the countryside surrounding the settlement and the ongoing maintenance and management of the open spaces once construction of 368 dwelling development on the former air field had been completed.



# Mid Cotswolds





## Open Spaces 4

## Andoversford

### 2011 Study Results

The 2011 Open Space, Sport and Recreation Study results for Andoversford raised a number of specific issues for the area, these are listed below:

Typology	Comment
Natural and Semi Natural Green Space and Country Parks	Increase the provision of the natural and semi natural open spaces in particular in the event of population growth.
Amenity Green Space	Ensure that new Amenity Green Space is provided as the population grows. Seek to increase access to the countryside by providing pedestrian walkways and cycle routes from the settlements, to areas of accessible countryside. Andoversford is identified as being deficient and should be prioritised.
Allotments	New Allotments required.

### 2015 Additional Comments from Andoversford Parish Council

The open spaces at present are sufficient to meet local demand, but as the village increases this will need to be reconsidered. There is a lack of finance to expand play facilities for younger and older children. The play area in the sports field in the village is run by the village hall.

### Provision in the Local Plan 2011 - 2031 Reg 19 for Andoversford

- **Number of dwellings** - Up to the year 2031 Andoversford is one of the 17 Principal Settlements allocated in the Cotswold District Council Local Plan 2011 - 2031. As such, Andoversford has been allocated 25 dwellings net in the plan period at A\_2 Land to the rear of Templefields and Crossfields.
- **Infrastructure** - a new natural open space or pocket park; and allotment provision.

### 2015 Study Results

The tables over the next few pages give an overview of the results from Andoversford Parish Council in 2015 regarding Open Spaces in the Andoversford Parish. The Open Spaces covered are Allotments, Cemeteries and Churchyards, Amenity Green Space, Parks and Gardens, Semi Natural and Natural Green Spaces, Green Corridors and other areas of Open Space, such as playing fields and sports pitches.

For each of the types (typology) of Open Space a table identifies the location of the space, the number, the accessibility, and if appropriate, the quality and size.

## 4 Open Spaces

The Cotswolds District does not hold any Green Flag Awards, a national award that encourages the provision of good quality public parks and green spaces that are managed in environmentally sustainable way. However, it is thought that within the 17 settlements in the district there are parks that could meet the Green Flag standard. Therefore, the basic criteria questions of the Green Flag award relating to Parks have been included in the review of this study.

Each of the tables, where possible, provide a total number of Square Metres or Hectares in each of the areas and whether they are within 300m or 2KM of the village.

If additional information has been made available by the Parish Council this has also been added.

### 2011 v 2015 Findings

The 2015 study identifies that there remains a need to increase access to Semi Natural and Natural Green Space and Amenity Green Spaces in the Andoversford area. New allotments also remain a priority.

### Allotments Andoversford

There are no Allotments in Andoversford

### Cemeteries & Churchyards in Andoversford

**What are they?** Urban burial grounds in the 19th century were originally envisaged as public open spaces, and were professionally designed to be attractive places to visit in their own right.

**What additional purpose can they have?** Regarded as public landscapes as well as functional burial places. Cemeteries have the potential to deliver as many amenity and ecological benefits as parks.

### Information from Andoversford Parish Council

The one burial ground, Andoversford & Dowdeswell Burial Ground, which is considered to be very good. Plans being made to have a shelter built and there is a lot of space remaining.

Typology	Quantity & Size	Accessibility	Quality Summary
<b>Cemeteries &amp; Churchyards</b>  1) Andoversford &	1) 1557m <sup>2</sup> / 0.1557 Ha	1) Public access	<b>Essential</b> - Parking available E - Site has well kept grass E - Is clean & litter free  <b>Desirable</b> - No toilet D - Site has seating

## Open Spaces 4

Typology	Quantity & Size	Accessibility	Quality Summary
Dowdeswell Burial Ground.			D - Site has litter bins D - Is a dog walking area X - Condition of site is good. X - Site has disabled access X - Has both staff/paid and volunteer involvement
TOTAL AMOUNT OF ACCESSIBLE SPACE - 1557m <sup>2</sup> / 0.1557 Ha			

**Cemetery and Churchyards Findings:**

Although there is no Quantity, Accessibility or a number Standard set for Cemeteries and Churchyards, Andoversford & Dowdeswell Burial Ground has public access. The Quality standard was applied. The burial ground met all of the **Essential criteria**, with a small amount of parking available, but this was not identified as being a particular issue.

The site met most of the **Desirable criteria**. There are no toilets at the sites, but again this was not raised as an issue of concern. The new **Quality questions** identifies that the burial ground is in good condition, that it has disabled access and that the site has both staff (paid services for the grass cutting) and volunteer involvement.

**Amenity Green Space in Andoversford**

**What are they ?** (most commonly but not exclusively in housing areas) including informal recreation spaces, green spaces in and around housing, domestic gardens and village greens.

**What additional purpose can they serve ?** Informal activities close to home or work, biodiversity, environmental education and awareness

**Information from Andoversford Parish Council**

There are two amenity green spaces, one on the Templefields estate and the Playing Field.

Typology	Quantity & Size	Accessibility	Quality Summary
<b>Amenity Green Space</b>	1) 1180m <sup>2</sup> / 0.118 Ha 2) 17536.55 <sup>2</sup> / 1.753655 Ha	1) Public Access	No information available

## 4 Open Spaces

Typology	Quantity & Size	Accessibility	Quality Summary
1) Green Space on Templefields Estate		2) Public Access	
2) Playing Field			
TOTAL AMOUNT OF ACCESSIBLE SPACE - 1.871655 Ha			

### Parks and Gardens Andoversford

There are no Parks and Gardens in Andoversford

### Semi Natural and Natural Green Spaces Andoversford

There are no Semi Natural and Natural Green Spaces Andoversford

### Country Parks Andoversford

There are no Country Parks in Andoversford. Crickley Hill Country Park is the nearest Country Park to Andoversford 9 KM away.

### Green Corridors in Andoversford

**What are they?** They include river and canal banks, cycle ways and public rights of way as well as accessible green space in urban fringes.

**What additional purpose can they serve ?** Walking, cycling or horse riding, Leisure purposes or travel Opportunities for wildlife migration

### Information from Andoversford Parish Council

The Green Corridors in the Andoversford area are marked on the map. The Public Rights of Way are generally good, feedback from individuals in the Parish if there is a problem.

Typology	Quantity Standard (National Standards)	Accessibility Standard	Existing Provision	Quality Summary
<b>Green Corridors</b>	There is no requirement to set catchments for	NA	NA	Refer to map -



Open Spaces 4

Typology	Quantity Standard (National Standards)	Accessibility Standard	Existing Provision	Quality Summary
	green corridors due to their linear nature.			
Total amount of accessible space			28,646m	
Total amount of accessible space within 2km 2km radius)			28,646m	(includes Public Rights of Way with
Total amount of accessible space within 300m			NA	

## 4 Open Spaces

### Additional Questions & Answers:

- Are the open spaces you have sufficient to meet local need? **At present, but as the village increases we will need to reconsider the facilities.**
- Do you plan to open any new facilities/open spaces in the near future? **No**
- Have you closed any open spaces in recent times? **No**
- Are any of your open spaces under threat from such factors as under use, a lack of finance for maintenance? **There is a lack local of finance to expand Play facilities for younger and older children.**
- Does your Parish hold any certificates for its open spaces or take part in any national events for example Green Flag for its parks, Love Parks week or Britain in Bloom? **No**
- Any further general comments about open space provision in your area or the district as a whole? **None**

## Open Spaces 4

**Accessible Open Space in Andoversford**

The national standards ANGst (Accessible Natural Green Space) have been used as a basis to measure the size and distance of the Open Space typologies in each of the 17 settlements that are known to have public access.

For Andoversford it was necessary to draw three, 300m circles to cover the main urban area and one 2km circle for the area.

The table below only counts sites that are available to the public. The type, number and size of the Open Space is logged. Then the sites are broken down into sites that are within the 300m radius and within 2km radius . To avoid counting a site twice if it is within the 300m zone it is not counted in the 2km zone.

Typology	Number & Size	Within 300m radius	Within 2KM radius
<b>Allotments</b>	0	0	0
<b>Churchyards and Cemeteries</b>	1 Site = 1,557m <sup>2</sup> / 0.1557 Ha	0	1 Site = 1557m <sup>2</sup> / 0.1557 Ha
<b>Amenity Green Space</b>	2 Sites = 1.871655 Ha	2 Sites = 1.871655 Ha	NA
<b>Parks &amp; Gardens</b>	0	0	0
<b>Semi Natural and Natural Green Spaces</b>	0	0	0
<b>Country Parks</b>	0	0	0
<b>Green Corridors</b>	28,646m	NA	28,646m
<b>Other Green Spaces</b>	0	0	0
<b>Total <sup>2</sup></b>	There are 4 sites  Three of the sites are inside the 300m radius and one within the 2km radius  The four accessible sites measure = 4.7362 Hectares	There are 3 sites within the 300m radius. These sites measure 1,8716m <sup>2</sup> / 1.871655 Ha	There is one site within the 2km radius. This site measures = 28,626m <sup>2</sup> / 2.8646 Ha

**Accessible Open Space**

## 4 Open Spaces

Requirement Location	Requirement Met?	Largest Site &
1 site 2 hectares 300m radius = (The Playing Field)	No	17536.55 <sup>2</sup> / 1.753655 Ha
1 site 20 hectares 2 KM radius =	No	NA

By applying the open space standard, Andoversford does not have a sufficient amount of Open Space within a 300m or 2km radius of the settlement. The largest site is the Playing Field which is in 300m radius of the settlement.



## Recommendations/Actions in light of Evidence from Andoversford Parish Council

### Allotments:

- Create new allotments
- Continue to monitor demand (by recording requests to the Parish Council) and support plans to increase provision where additional demand is identified.

### Cemetery and Churchyards:

- Continue to maintain the areas to their existing standard.

### Amenity Green Spaces:

- No information was available. Investigate areas of opportunity for Amenity Green Spaces in and around Andoversford

### Parks and Gardens:

- There are no Parks/Gardens in Andoversford. Investigate the need and provision of a park in the Andoversford area.

### Semi Natural and Natural Green Spaces:

- There are no Semi Natural and Natural Green Spaces. Look to increase the provision of natural and semi natural open space especially within 300m of the village.

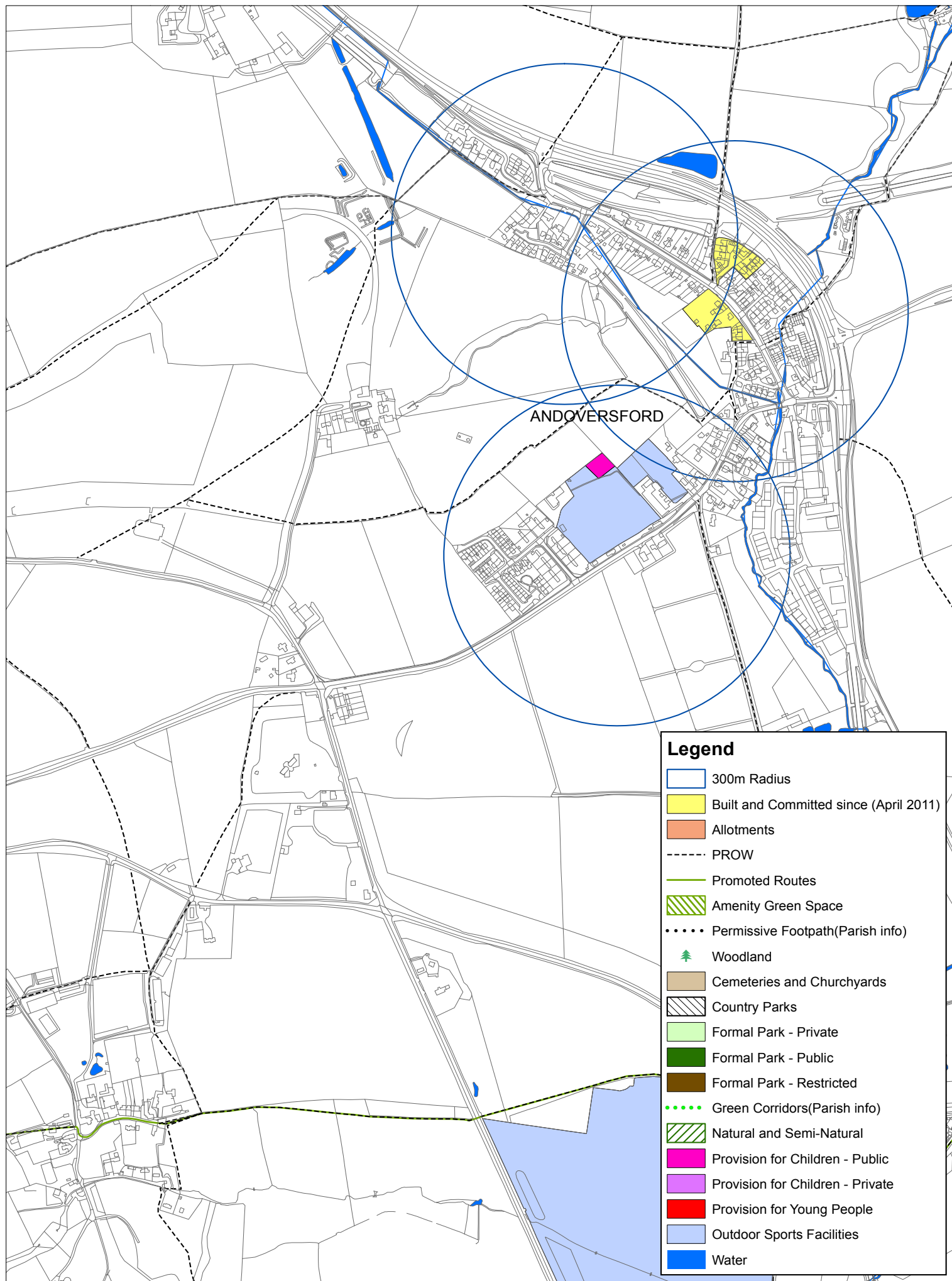
### Country Parks:

- There are no Country Parks in the middle of the Cotswold District.
- Investigate the provision of a Country Park in the middle Cotswold area.

### Green Corridors, Popular Walks and Public Rights of Way:

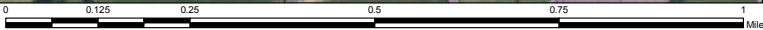
- Continue to monitor use as demand is increased.

# ANDOVERSFORD UPDATE 2016





ANDOVERSFORD GREEN INFRASTRUCTURE 2017





## 4 Open Spaces

### Bourton-on-the-Water

#### 2011 Study Results

The 2011 Open Space, Sport and Recreation Study results for Bourton-on-the-Water raised a number of specific issues for the area, these are listed below:

Typology	Comment
Parks and Gardens	Provide a formal Park in the west of Bourton-on-the-Water.
Natural and Semi Natural green space and Country Parks	Improve access routes to Bourton Gravel Pits and Temple Ham Meadow for pedestrians and cyclists. Provide new natural open space in the north west of Bourton on the Water.
Amenity Green Space	Ensure that new amenity green space is provided in Bourton-on-the-Water as part of new development.
Allotments	Provide new allotments in Bourton-on-the-Water

#### Provision in the Local Plan 2031 Reg 19 for Bourton-on-the-Water

- **Number of dwellings** - Up to the year 2031 Bourton-on-the-Water, is one of the 17 Principal Settlements allocated in the Cotswold District Council Local Plan 2011 - 2031. As such, Bourton-on-the-Water has been allocated 32 dwellings in the plan period. B\_32 Countrywide stores (32 dwellings net).
- **Local Green Spaces** - One site in Bourton-on-the-Water has been put forward for Local Green Space designation in the Local Plan via extensive work with from Bourton-on-the-Water Parish Council. The site Manor Fields Bourton-on-the-Water (Policy EN3 - LGS3)

#### 2011 v 2015 Findings

The 2015 study reveals that there is an opportunity to provide a park/garden and improve access to the natural and semi natural spaces. Two public open spaces have been included in the new housing estates (Bloor Home and Bourton Chase Developments) and a new allotment site has been opened at Springvale.

#### 2015 Study Findings

The tables over the next few pages give an overview of the results from Bourton-on-the-Water Parish Council in 2015 regarding Open Spaces. The Open Spaces covered are Allotments, Cemeteries and Churchyards, Amenity Green Space, Parks and Gardens, Semi Natural and Natural Green Spaces, Green Corridors and other areas of Open Space, such as playing fields and sports pitches.

For each of the types (typology) of Open Space a table identifies the location of the space, the number, the accessibility, and if appropriate, the quality and size.



Open Spaces 4

The Cotswolds District does not hold any Green Flag Awards, a national award that encourages the provision of good quality public parks and green spaces that are managed in environmentally sustainable way. However, it is thought that within the 17 settlements in the district there are parks that could meet the Green Flag standard. Therefore, the basic criteria questions of the Green Flag award relating to Parks have been included in the review of this study.

Each of the tables, where possible, provide a total number of square metres or hectares in each of the areas and whether they are within 300m or 2KM of the village.

If additional information has been made available by the Parish Council this has also been added.

## 4 Open Spaces

### Allotments in Bourton-on-the-Water

**What are they?** Allotments can include community gardens, orchards and city urban farms

**What additional benefits can they have?** Allotments have health, social and environmental benefits

### Information from Bourton-on-the-Water Parish Council

There is one Orchard, Jubilee Orchard in Bourton-on-the-Water and three Allotments 2) Cemetery Lane Allotments, 3a) Piece Hedge Allotments, 3b) Springvale Allotments. The Jubilee Community Orchard is a new site, although it was previously an allotment site. Part of the Cemetery Lane Allotments has been annexed to the cemetery to provide the new Jubilee Memorial Garden.

Typology	Quantity Standard	Accessibility	Existing Provision Size and number	Quality Summary
<b>Allotments</b>  1) Jubilee Orchard.  2) Cemetery Lane Allotments,  3a) Piece Hedge Allotments,  3b) Springvale Allotments	15 per 1,000 households  300 yards <sup>2</sup> or 250m <sup>2</sup>	1) Public Access  2) Public Access  3a) No Public Access  3b) No Public Access	1) NA  2) 49 half plots 10 full  3a) 8 x half plots  3b) 12 half plots  Jubilee Community Orchard is a new site, although was previously an allotment site.  Springvale allotments - new site	<b>Essential</b> - All sites well maintained  E - High quality boundaries apart from (3a)  E - Access to water apart from 1 NA & (3a)  E - Safe & secure apart from (3a)  E - No have litter/dog bins apart from (1)  <b>Desirable</b> - Parking apart from (3a)  D - Notice Boards apart from (3a)  D - No toilets apart from (1)  X - All have volunteer & staff involvement  X - All have disabled access apart from (3a)

## Open Spaces 4

Typology	Quantity Standard	Accessibility	Existing Provision Size and number	Quality Summary
				X - All publicly owned
<b>Restricted Access -: TOTAL AMOUNT OF ACCESSIBLE SPACE - 00.00 Ha</b>				

**Allotment Findings:**

**Quantity:** The predicted number of residential properties in Bourton-on-the-Water up to the year 2031 would suggest that, using the quantity standard there is enough provision within the Parish for allotments.

**Accessibility:** Two of the three sites are in public ownership and is therefore open to the public, but as space used by allotment members they are not considered to be an open space for all. Therefore, all allotment sites are discounted from contributing to total amount of accessible open space in Bourton-on-the-Water.

**Quality:** All of the Essential and desirable criteria for the Allotments is met at all of the sites (excluding the orchard) apart from (3a) Piece Hedge Allotments. However, there are no toilets at any of the allotments, a desirable, apart from Jubilee Orchard, which has four. Of the new Quality standards all of the sites have volunteer or staff involvement and all apart from 3a) Piece Hedge Allotments have disabled access.

**Cemeteries & Churchyards in Bourton-on-the-Water**

**What are they?** Urban burial grounds in the 19th century were originally envisaged as public open spaces, and were professionally designed to be attractive places to visit in their own right.

**What additional purpose can they have?** Regarded as public landscapes as well as functional burial places. Cemeteries have the potential to deliver as many amenity and ecological benefits as parks.

**Information from Bourton-on-the-Water Parish Council**

There are three Cemeteries/Churchyards in Bourton-on-the-Water they are 1) St Lawrence's (closed), 2) Cemetery lane Cemetery, 3) Jubilee Memorial Garden. The Cemetery lane Cemetery, has 50 plus plots (10 years) and 3) The Jubilee Memorial Garden is for the interment of ashes only. When the cemetery is full, consideration would be given into expanding into the old Baptist Cemetery on the same site.

Typology	Quantity & Size	Accessibility	Quality Summary
<b>Cemeteries &amp; Church Yards</b>	1) 2568.09m <sup>2</sup> / 0.256809 Ha	No Standard required	<b>Essential</b> - All have parking E - All sites have well kept grass

## 4 Open Spaces

Typology	Quantity & Size	Accessibility	Quality Summary
1) St Lawrence's (closed) 2) Cemetery lane Cemetery 3) Jubilee Memorial Garden	2) 8422.29m <sup>2</sup> / 0.842229 Ha 3) 1643.14m <sup>2</sup> / 0.164314 Ha	1) Public access 2) Public access 3) Public access	E - All are clean & litter free <b>Desirable</b> - None have a toilet D - All sites have seating D - All sites have litter bins apart from (1) D - All are not considered to be part of a dog walk area X - All sites in good condition. X - All have disabled access X - All have both staff and volunteer involvement
Total amount of accessible space		12633.52 m <sup>2</sup> / 1.263352 Ha	
Total amount of accessible space within 2km		NA	
Total amount of accessible space within 300m		12633.52m <sup>2</sup> / 1.263352 Ha	

### Cemetery and Churchyards Findings:

Although there is no Quantity and Accessibility set for Cemeteries and Churchyards, Bourton-on-the-Water Cemeteries and Churchyards all have public access. The Quality standard was applied.

The Cemeteries and Churchyards met most of the **Essential criteria**. Of the **Desirable criteria**, again most of the criteria was met. There are no toilets at any of the sites and all are not considered to be part of a dog walking area, but this was not raised as an issue of concern. All have litter bins apart from 1) St Lawrence's, but again this was not raised as a concern. The new **Quality questions** identify that all the sites are in good condition, that all of the sites have disabled access and that all of the sites have both staff and volunteer involvement.

### Amenity Green Space in Bourton-on-the-Water

**What are they ?** (most commonly but not exclusively in housing areas) including informal recreation spaces, green spaces in and around housing, domestic gardens and village greens.

**What additional purpose can they serve ?** Informal activities close to home or work Biodiversity Environmental education and awareness

## Open Spaces 4

**Information from Bourton-on-the-Water Parish Council**

Public Open spaces are to be incorporated into two new housing developments, Linden Homes at Station Road junction with A429 Fosseway and Bloor Homes off Roman Way.

Typology	Quantity & Size	Accessibility	Quality Summary
<b>Amenity Green Space</b>	1)1018m <sup>2</sup> 0.1018 Hectares square	1) Public access	X - All sites are in good condition
1) Croome Gardens	2)1073m <sup>2</sup>	2) Public access	X - Staff or volunteer involvement is (NA) at the time
2) Bibury Corner	0.1073Hectares square	3) Two public open spaces are new, included in the new housing estates (Bloor Home and Bourton Chase Developments)	X - None of the sites have toilet
3) Various marked on map			X - All have disabled access
Total amount of accessible space		2,091m <sup>2</sup> /0.2091 Ha	
Total amount of accessible space within 2km		NA	
Total amount of accessible space within 300m		2,091m <sup>2</sup> /0.2091 Ha	

**Amenity Green Space Findings**

**Quantity, Size, Accessibility:** There are two main sites, /0.2091 Hain size, they all have public access.

**Quality:** All of the sites are in good condition, and have disabled access. At the time, there was reported to be no staff or volunteer involvement.

**Parks & Gardens in Bourton-on-the-Water**

There are no Parks and gardens in Bourton-on-the-Water.

**Semi Natural and Natural Green Spaces in Bourton-on-the-Water**

**What are they?** They include publicly accessible woodlands, urban forestry, scrub, grasslands, commons, meadows), wetlands, open running water and wastelands.

**What additional purpose can they serve ?** They can be spaces for recreation, but a clear distinction should be made between those natural spaces which are accessible to the public and those are not, as many sites can also be Key Wildlife Sites and (SSSIs) Scientific Sites of Special Interest.

**Information from Bourton-on-the-Water Parish Council**

## 4 Open Spaces

There are a number of Semi Natural and Natural Green spaces in Bourton-on-the-Water to view all of them please refer to the map. The main Semi Natural and Natural Green Space in Bourton-on-the-Water is Greystones, which is owned by Gloucestershire Wildlife Trust is a Site of Scientific Special Interest and a Scheduled Ancient Monument.

The site was awarded a grant from the Heritage Lottery Fund as 'Cradle of the Cotswold Project' to improve/develop facilities, emphasis on archaeology, biodiversity, education & tourism.

Typology	Quantity & Size	Accessibility	Quality Summary
<b>Semi Natural and Natural Green Spaces</b>  1) Greystones Farm Nature Reserve  2) Other sites are shown on the map	1) 698201.25m <sup>2</sup> / 69.820125 Ha	1) Public access  2) Public access	<b>Essential</b> - Site is clean & maintained.  E - Has natural features, including SSSI & SAM  <b>Desirable</b> - There is limited parking  D - Site has trees & shrubs  D - Site has dog bins  D - Dog walking area  D - Site has information or signage  X - There is limited disabled access  X - Both staff and volunteer involvement
Total amount of accessible space =		698201.25m <sup>2</sup> / 69.820125 Ha	
Total amount of accessible space within 2km = 300m)		698201.25m <sup>2</sup> / 69.820125 Ha (in 2km & 300m)	
Total amount of accessible space within 300m		698201.25m <sup>2</sup> / 69.820125 Ha (in 2km & 300m)	

### Semi Natural and Natural Green Spaces Findings

**Quantity, Size, Accessibility:** There is one main site, 69.820125 Hectares square in size, Greystones Farm Nature Reserve, this site has public access.



## Open Spaces 4

**Quality:** The main site, Greystones Farm Nature Reserve meets all of the Essential criteria. It also meets most of the desirable criteria apart from parking, which is available, but limited, however, this was not raised as a concern.

The new Quality criteria identified that there is both staff and volunteer involvement at the site, but there is limited disabled access.

### Country Parks in Bourton-on-the-Water

There are no Country Parks in Bourton-on-the-Water.

### Green Corridors in Bourton-on-the-Water

**What are they?** They include river and canal banks, cycle ways and public rights of way as well as accessible green space in urban fringes.

**What additional purpose can they serve ?** Walking, cycling or horse riding, Leisure purposes or travel Opportunities for wildlife migration

### Information from Bourton-on-the-Water Parish Council

All of the Green Corridors are shown on the map and numerous Public Rights of Ways. All footpaths are popular with dog walkers, locals & visitors

Typology	Quantity & Size	Accessibility	Quality Summary
<b>Green Corridors</b>	There is no requirement to set catchments for green corridors due to their linear nature.  Refer to map	Refer to map	<b>Essential</b> - Are clean and litter free  E - Have defined footpaths with a level surface  E - There are nature features  <b>Desirable</b> - There is appropriate signage  D - Are for pedestrians only  D - There are dog/litter bins  X - Volunteer involvement  X - There is no disabled access
Total amount of accessible space		34,559m	

## 4 Open Spaces

Typology	Quantity & Size	Accessibility	Quality Summary
Total amount of accessible space within 2 KM (includes Public Rights of Way with 2km radius)		34,559m	
Total amount of accessible space within 300m		NA	

**Quantity:** There is no requirement to set catchments for green corridors due to their linear nature.

**Accessibility:** Refer to map

**4.2 Quality:** Of the **Essential criteria**, all the sites are considered to be clean and litter free, have defined footpaths with a level surface and have natural features. The sites also meet all of the **Desirable criteria**. The new quality criteria identify there is volunteer involvement, but there is no disabled access to the Public Rights of Way.

### Additional Questions & Answers:

- Are the open spaces you have sufficient to meet local need? **Yes**
- Do you plan to open any new facilities/open spaces in the near future? **Yes at the developments at Station Road junction & Roman Way.**
- Have you closed any open spaces in recent times? **No**
- Are any of your open spaces under threat from such factors as under use, a lack of finance for maintenance? **No**
- Does your Parish hold any certificates for its open spaces or take part in any national events for example Green Flag for its parks, Love Parks week or Britain in Bloom? **No**

### Other areas of Open Space

What	Quantity	Accessibility
Cotswold School - Playing Fields	1 Site - 79639.34 m <sup>2</sup> 7.963934 Ha	Restricted
Outdoor Sports Facilities and Playing field Rissington Road	1 Site - 32871.18 m <sup>2</sup> 3.287118 Ha	Accessible
		*Information from desktop assessment

### Accessible Open Space in Bourton-on-the-Water

The national standards ANGst (Accessible Natural Green Space) have been used as a basis to measure the size and distance of the Open Space typologies in each of the 17 settlements that are known to have public access.

## Open Spaces 4

For Bourton-on-the-Water it was necessary to draw 12, 300 meter circles to cover the main urban area and one 2KM circle for the area.

The table below only counts sites that are available to the public. The type, number and size of the Open Space is logged. Then the sites are broken down into sites that are within the 300 meters radius and within 2KM radius . To avoid counting a site twice if it is within the 300 metre zone it is not counted in the 2KM zone.

Typology	Number & Size	Within 300m radius	Within 2KM radius
<b>Allotments</b>	NA	NA	NA
<b>Churchyards and Cemeteries</b>	3 Sites = 12633.52 m <sup>2</sup> / 1.263352 Ha	3 Sites = 12633.52 m <sup>2</sup> / 1.263352 Ha	0
<b>Amenity Green Space</b>	2 main Sites= 2,091m <sup>2</sup> / /0.2091 Ha	2 main sites = 2,091m <sup>2</sup> /0.2091 Ha	0
<b>Parks &amp; Gardens</b>	0	0	0
<b>Semi Natural and Natural Green Spaces</b>	1 Site 698201.25m <sup>2</sup> / 69.820125 Ha + others on map, but not measured (site both 2km & 300m)	1 Site 698201.25m <sup>2</sup> / 69.820125 Ha+ others on map, but not measured (Both 2 KM & 300 m)	1 Site 698201.25m <sup>2</sup> / 69.820125 Ha (site Both 2km & 300m)
<b>Country Parks</b>	0	0	0
<b>Green Corridors</b>	34,559m	34,559m	34,559m
<b>Other Green Spaces</b>	1 Site - 32871.18 m <sup>2</sup> 3.287118 Ha	1 Site - 32871.18 m <sup>2</sup> 3.287118 Ha	0
<b>Total = 74.579695 Ha</b>	There are seven sites  Six of the sites are inside the 300m radius and one site is within both the 300m and 2km radius. In total there is 74.579695 Ha of open space.	There are seven sites  Six of the sites are inside the 300m radius and one site is within both the 300m and 2km radius. In total there is 74.579695 Ha of open space.	There are seven sites  Six of the sites are inside the 300m radius and one site is within both the 300m and 2km radius. In total there is 74.579695 Ha of open space.

## 4 Open Spaces

### Accessible Open Spaces

Requirement Location	Requirement Met?	Largest Site &
1 site 2 hectares 300m radius = Nature Reserve 69.820125 Ha and	Yes	Two sites, Greystones Farm

By applying the open space standard Bourton-on-the-Water has, overall, a sufficient amount of Open Space within a 300m radius and 2KM radius of the settlement.

## Open Spaces 4

**Recommendations/Actions in light of Evidence from Bourton-on-the-Water Parish Council****Allotments:**

- The predicted number of residential properties in Bourton-on-the-Water up to the year 2031 would suggest that, using the quantity standard there is enough provision within the Parish for allotments.
- Continue to monitor demand in other areas (by recording requests to the Parish Council) and support plans to increase provision where additional demand is identified.
- Investigate the provision/need for toilets.

**Cemetery and Churchyards:**

- Continue to maintain the areas to their existing standard.

**Amentiy Green Spaces:**

- Continue to maintain the areas to their existing standard.
- Look into encouraging volunteer involvement.

**Parks and Gardens:**

- There are no Parks/Gardens in Bourton-on-the-Water Investigate the need and provision of a park in Bourton-on-the-Water.

**Semi Natural and Natural Green Spaces :**

- Investigate the provision/need for greater disabled access further.

**Country Parks:**

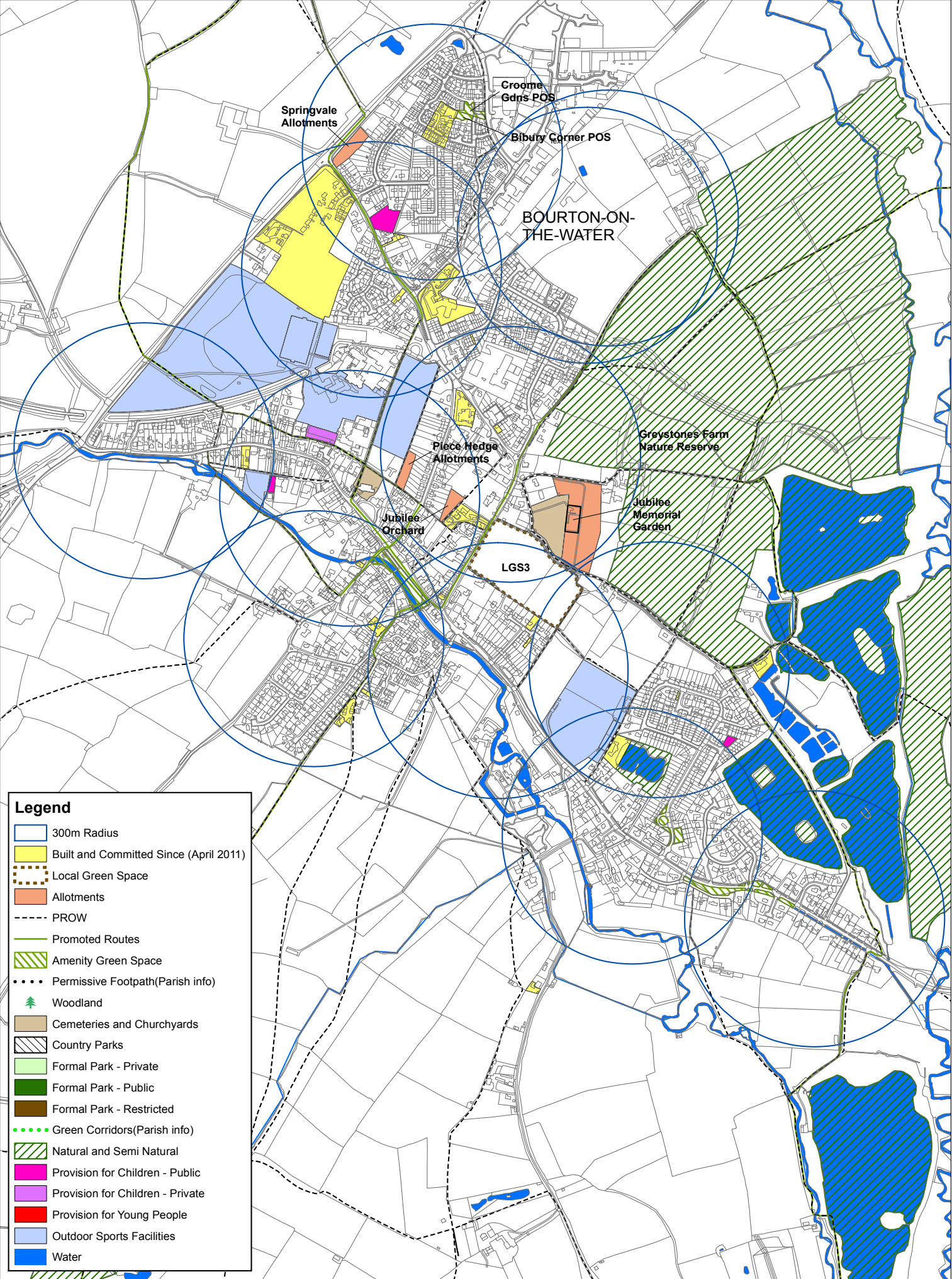
- There are no Country Parks in the north of the Cotswold District.
- Investigate the provision of a Country Park in the Bourton-on-the-Water area.

**Green Corridors, Popular Walks & Public Rights of Way:**

- Investigate the provision/need for greater disabled access further.



# BOURTON-ON-THE-WATER UPDATE 2016





BOURTON-ON-THE-WATER GREEN INFRASTRUCTURE 2017





## 4 Open Spaces

### Northleach

#### 2011 Study Results

The 2011 Open Space, Sport and Recreation Study results for Northleach raised a number of specific issues for the area, these are listed below:

Typology	Comment
Amenity Green Space	Provision of Amenity Green Space is particularly important as the are the only spaces in the village.

#### 2015 - Additional Comments from Town

Northleach are developing a Neighbourhood Plan and are hoping with landowner involvement to create a green corridor around Northleach.

#### Provision in the Local Plan 2011 - 2031 Reg 19 for Northleach

**Number of dwellings** - Up to the year 2031 Northleach, is one of the 17 Principal Settlements allocated in the Cotswold District Council Local Plan 2011-31. As such, Northleach has been allocated 22 dwellings in the plan period. N\_13B Land north west of Hammond Drive and Midwinter Road (5 dwellings net) and N\_14B land adjoining East End and Nostle Road (17 dwellings net).

#### 2015 Study Findings

The tables over the next few pages give an overview of the results from Northleach Town Council in 2015 regarding Open Spaces in the Northleach. The Open Spaces covered are Allotments, Cemeteries and Churchyards, Amenity Green Space, Parks and Gardens, Semi Natural and Natural Green Spaces, Green Corridors and other areas of Open Space .

For each of the types (typology) of Open Space a table identifies the location of the space, the number, the accessibility, and if appropriate, the quality and size.

The Cotswolds District does not hold any Green Flag Awards, a national award that encourages the provision of good quality public parks and green spaces that are managed in environmentally sustainable way. However, it is thought that within District's the 17 Principal Settlements there are parks that could meet the Green Flag standard. Therefore, the basic criteria questions of the Green Flag award relating to Parks have been included in the review of this study.

Each of the tables, where possible, provide a total number of square metres or hectares in each of the areas and whether they are within 300m or 2km of the village.

If additional information has been made available by the Town Council this has also been added.

#### 2011 v 2015 findings

- Amenity Green space continues to be important.

## Open Spaces 4

**Allotments in Northleach**

**What are they?** Allotments can includes community gardens, orchards and city urban farms

**What additional benefits can they have?** Allotments are health benefits, social environmental

**Information from Northleach Town Council**

There are three allotment sites in Northleach, 1) the Nangle site has a two year waiting list 10 people, but waiting list has moved quite quickly in the last few years.

Typology	Quantity Standard (National Standards)	Accessibility Standard	Existing Provision Size and number	Quality Summary
<b>Allotments</b> 1) Nangle 2) Cotswold Hall 3) Easting	Recommended Number: 15 per 1,000 households 300 square yards or 250 square metres	1) Public Access 2) No public Access 3) No public Access	1) 28 plots 2) 11 plots 3) 6 plots	Essential - All well maintained E - High quality boundary (1 & 2) 3 not known E - Access to water (1 & 2) 3 not known E - No litter bins Desirable - Parking at (1) none at (2 & 3) D - No Notice Boards at entrances D - (1 & 2) not level (3) level D - None of sites have toilets X - (1) Managed, not staffed (2&3) volunteers X - No disabled access
<b>Restricted Access -: TOTAL AMOUNT OF ACCESSIBLE SPACE - 0 Ha</b>				

## 4 Open Spaces

### Allotment Findings:

**Quantity:** The predicted number of residential properties in Northleach up to the year 2031 would suggest that, using the quantity standard there is enough provision within the Parish for allotments.

**Accessibility:** One of the three sites is in public ownership and is therefore open to the public, but as space used by allotment members it is not considered to be an open space for all. Therefore, the site is discounted from contributing to total amount of accessible open space in Northleach.

**Quality:** All of the allotments met the **Essential criteria** for being well maintained, with 1) Nangle and 2) having high quality boundaries and access to water. There has been no issues regarding security recently. There are no litter bins at any of the sites, but 1) the Nangles has bins close by. Information regarding the aforementioned was not known for the Easting site. Of the **Desirable criteria** the Nangle is the only site site that has parking, along with the Cotswold Hall it is not a level site. None of the sites have toilets or notice boards. The new **Quality questions** identify that 2) Cotswold Hall and 3) Easting the have volunteer involvement, and the 1) Nangle is not staffed, but managed by the council. There is no disabled access at any of the sites.

### Cemeteries & Churchyards in Northleach

**What are they?** Urban burial grounds in the 19<sup>th</sup> Century were originally envisaged as public open spaces, and were professionally designed to be attractive places to visit in their own right.

**What additional purpose can they have?** Regarded as public landscapes as well as functional burial places. Cemeteries have the potential to deliver as many amenity and ecological benefits as parks.

### Information from Northleach Town Council

There are two Cemeteries/Churchyards in Northleach, 1) St Peter and St Paul Churchyard and Cemetery where there is believed to be 30 years left in the cemetery and, 2) Antelope Lane Cemetery, which is believed to be full.

Typology	Quantity & Size	Accessibility	Quality Summary
<b>Cemeteries &amp; Church yards</b>	No recommended National Standard	No recommended National Standard	<b>Essential</b> - No parking at (1)&(2) E - (1) well kept grass (2) not.
1) St Peter and St Paul Churchyard and Cemetery	1) 13279.71m <sup>2</sup> / 1.327971 Ha	1) Public Access	E - (1) clean & litter free (2) largely
2) Antelope Lane Cemetery	2) 0	2) No public access	<b>Desirable</b> - None have a toilet D - (1) seating (2) none (1) litter bin, but not dog (2) neither



## Open Spaces 4

Typology	Quantity & Size	Accessibility	Quality Summary
			D - (1) unofficially, considered to be part of a dog walk area (2) not. X - (1) condition of site mixed (2) poor. X - Disabled access (1) in part (2) no X - Both have volunteer involvement
Total amount of accessible space		13.45 Ha	
Total amount of accessible space within 2km		NA	
Total amount of accessible space within 300m		13.45 Ha	

**Cemetery and Churchyards Findings:**

Although there is no Quantity, Accessibility or a number Standard set for Cemeteries and Churchyards it is known that 1) St Peter and St Paul Churchyard and Cemetery has public access and the 2) Antelope Lane Cemetery does not. The Quality standard was applied. The St Peter and St Paul Churchyard and Cemetery met most of the **Essential criteria** apart from having no parking facilities, but this was not identified as being a particular issue. 2) Antelope Lane Cemetery, is largely clean and litter free, but does not have well kept grass.

Of the **Desirable criteria**, there are no toilets at either site, but this was not raised an issue of concern. 1) St Peter and St Paul Churchyard and Cemetery has seating and a litter bin and is, unofficially known to be part of a dog walk. 2) Antelope Lane Cemetery has with no public access. The new **Quality questions identify** that the condition of 1) St Peter and St Paul Churchyard and Cemetery is mixed and there is disabled access in part. The condition of 2) Antelope Lane Cemetery is poor and there is no disabled access. Both sites volunteer involvement.

**Amenity Green Space in Northleach**

**What are they ?** (most commonly but not exclusively in housing areas) including informal recreation spaces, green spaces in and around housing, domestic gardens and village greens.

**What additional purpose can they serve ?** Informal activities close to home or work, biodiversity, environmental education and awareness

**Information from Northleach Town Council**

There is one amenity green space in Northleach located between the Westwoods centre and the surgery

## 4 Open Spaces

Typology	Quantity & Size	Accessibility	Quality Summary
<b>Amenity Green Space</b>  1) land between Westwoods centre and Surgery  (King George's Field)	1 Site = 5413m <sup>2</sup> / 0.5413 Ha	1) Public Access	X - Condition of site mixed  X - No toilet  X - No disabled access  X - Staff/volunteer involvement
Total amount of accessible space		= 5413m <sup>2</sup> / 0.5413 Ha	
Total amount of accessible space within 2km		NA	
Total amount of accessible space within 300m		= 5413m <sup>2</sup> / 0.5413 Ha	

### Amenity Green Space Findings

**Quantity, Size, Accessibility:** There is one site, (King George's Field)

**Quality:** The condition of the site is mixed, there is no toilet or disabled access. The grass is maintained.

### Parks and Gardens

There are no Parks/gardens in Northleach

### Semi Natural and Natural Green Spaces in Northleach

**What are they?** They include publicly accessible woodlands, urban forestry, scrub, grasslands, commons, meadows), wetlands, open running water and wastelands.

**What additional purpose can they serve ?** They can be spaces for recreation, but a clear distinction should be made between those natural spaces which are accessible to the public and those are not, as many sites can also be Key Wildlife Sites and (SSSIs) Scientific Sites of Special Interest.

### Information from Northleach Town Council

There are three Semi Natural and Natural Green Spaces in Northleach 1) The Water Meadow, 2) River Leach along the playing field, 3) Wooldlands to north of the town.

Typology	Quality	Accessibility	Quality Summary
<b>Semi Natural and Natural Green Spaces</b>  1) The Water Meadow	1) 19471.27m <sup>2</sup> /1.947127 Ha	1) Public Access  2) Public Access	<b>Essential:</b> maintenance & cleanliness Yes (1) & (2), (3)?

## Open Spaces 4

Typology	Quality	Accessibility	Quality Summary
2) River Leach along the playing field	2) Linear so not counted, refer to Green Corridors	3) Public Access	E - All have natural features
3) Woodlands to north of the town	3) 17268.65m <sup>2</sup> / 1.726865 Ha (in both 300m & 2KM radius)		<b>Desirable:</b> - None of the sites have parking D - All sites have trees and shrubs D - (1) & (2) have dog bins (3) none X - No disabled access to (1),(2), (3) X - Staff/volunteer involvement (1) &(2) occasionally checked.
Total amount of accessible space 36, 739.92m <sup>2</sup> / 3.673992 Ha			
Total amount of accessible space within 2KM NA			
Total amount of accessible space 36, 739.92m <sup>2</sup> / 3.673992 Ha (both in 300m and 2KM radius)			

Table 1

## Semi Natural and Natural Green Spaces Findings

**Quantity, Size and Accessibility:** There are two Semi Natural and Natural Green Spaces in Northleach. All three sites have public access with the total size of the sites measuring 36,739.92 m<sup>2</sup>/3.673992 Hectares square. The Water Meadow and the Woodlands to the north of the town have public access are within 300 metres of the village.

**Quality:** Of the **Essential criteria**, all the sites have natural features. 1) The Water Meadow and 2) the River Leach along the playing field are maintained. The water meadow is cut annually and the River Leach is quite clean and due a clear out. It is not evident that 3) The woodlands to the north of the town are maintained.

The **Desirable criteria** reveals that none of the sites have parking, but they are all available for dog walking and have trees and shrubs. There are dog bins and information/signage at 1) The Water Meadow and 2) River Leach along the playing field, but none at 3) the woodlands.

## 4 Open Spaces

The new **Quality questions** identify that there is no disabled access to any of the sites. \*None of the sites have staff or volunteer involvement, but 1) The Water Meadow and 2) River Leach along the playing field are occasionally checked by the Town Council and riparian owners of the river.

### Country Parks

There are no Country Parks in Northleach

### Green Corridors in Northleach

**What are they?** They include river and canal banks, cycle ways and public rights of way as well as accessible green space in urban fringes.

**What additional purpose can they serve ?** Walking, cycling or horse riding, Leisure purposes or travel Opportunities for wildlife migration

### Information from Northleach Town Council

There is one main green corridor, the River Leach River bank as listed above under Semi Natural and Natural areas and lots of rights of way with different features, which are well trodden and locally known.

Typology	Quantity Standard (National Standards)	Accessibility Standard	Quality Summary
<b>Green Corridors</b>	There is no requirement to set catchments for green corridors due to their linear nature.	Refer to map	Refer to map
Total amount of accessible space		32,495m	
Total amount of accessible space within 2 KM (includes Public Rights of Way with 2 KM radius)		32,495m	(includes Public Rights of Way with 2 KM radius)
Total amount of accessible space within 300m		NA	

### Additional Questions & Answers:

- Are the open spaces you have sufficient to meet local need? **Yes**
- Do you plan to open any new facilities/open spaces in the near future? **No**
- Have you closed any open spaces in recent times? **No**

## Open Spaces 4

- Are any of your open spaces under threat from such factors as under use, a lack of finance for maintenance? **No**
- Does your Parish hold any certificates for its open spaces or take part in any national events for example Green Flag for its parks, Love Parks week or Britain in Bloom? **No**
- Any further general comments about open space provision in your area or the district as a whole?  
**We are developing a Neighbourhood Plan and are hoping with landowner involvement to create a green corridor around Northleach.**



## 4 Open Spaces

### Accessible Open Space in Northleach

The national standards ANGst (Accessible Natural Green Space) have been used as a basis to measure the size and distance of the Open Space typologies in each of the 17 settlements that are known to have public access.

For Northleach it was necessary to draw four, 300 meter circles to cover the main urban area and one 2KM circle for the area.

The table below only counts sites that are available to the public. The type, number and size of the Open Space is logged. Then the sites are broken down into sites that are within the 300 meters radius and within 2KM radius . To avoid counting a site twice if it is within the 300 metre zone it is not counted in the 2KM zone.

Typology	Number & Size	Within 300m radius	Within 2KM radius
<b>Allotments</b>	NA	NA	NA
<b>Churchyards and Cemeteries</b>	1 Site = 13279.71m <sup>2</sup> / 1.327971 Ha	1 Site = 13279.71m <sup>2</sup> / 1.327971 Ha	0
<b>Amenity Green Space</b>	1 Site = 5413 m <sup>2</sup> / 0.5413 Ha	1 Site = 5413 m <sup>2</sup> / 0.5413 Ha	0
<b>Parks &amp; Gardens</b>	0	0	0
<b>Semi Natural and Natural Green Spaces</b>	1) = 19471.27m <sup>2</sup> / 2) 17268.65m <sup>2</sup> Both = 36,739.92 m <sup>2</sup> /3.673992 Ha	1 Sites = 19471.27 m <sup>2</sup> / 1.947127 Ha	1 Site = 17268.65 m <sup>2</sup> / 1.726865 Ha (in both 2 KM & 300 m)
<b>Country Parks</b>	0	0	0
<b>Green Corridors</b>	32,495m	32,495m	32,495m
<b>Other Green Spaces - Play Areas</b>	2 Sites = 1206m <sup>2</sup> / 0.1206 Ha	2 Sites = 1206m <sup>2</sup> / 0.1206 Ha	0
<b>Total = 5.663863 Ha</b>	Six sites in total, one of the sites is partially outside the 2KM radius	Six sites within 300m radius = 39369.98m <sup>2</sup> / 3.9369Ha	1 Site = 17268.65 m <sup>2</sup> / 1.726865 Ha (in both 2 KM & 300 m)

ANGst (Accessible Natural Green Space standard)

Requirement Location	Requirement Met?	Largest Site &
1 site 2 hectares 300m radius = Water meadow	No	19471.27m <sup>2</sup> /1.947127 Ha - The
1 site 20 hectares 2 KM radius =	No	

By applying the open space standard, Northleach has, overall, a sufficient amount of Open Space within a 300m radius, 5.663863 Hectares square. Two sites, The Water meadow and the Woodland to the North of the town are slightly under two hectares each. There are no accessible sites measuring 20 hectares square in a 2 KM radius of Northleach.

## 4 Open Spaces

### Recommendations/Actions in light of Evidence from Northleach Town Council

#### Allotments:

- Continue to monitor demand (by recording requests to the Town Council) and support plans to increase provision where additional demand is identified.
- Investigate the provision/need for greater disabled access further.
- Investigate the provision/need for litter/dog bins.

#### Cemetery and Churchyards:

- Continue to maintain the areas to their existing standard.
- Investigate the provision/need for greater disabled access further .

#### Amenity Green Spaces

- Continue to maintain the areas to their existing standard

#### Parks and Gardens

- There are no Parks/Gardens in Northleach. Investigate the need and provision of a park in the Northleach area.

#### Semi Natural and Natural Green Spaces

- Continue to maintain the areas to their existing standard.
- Investigate the provision/need for greater disabled access further.

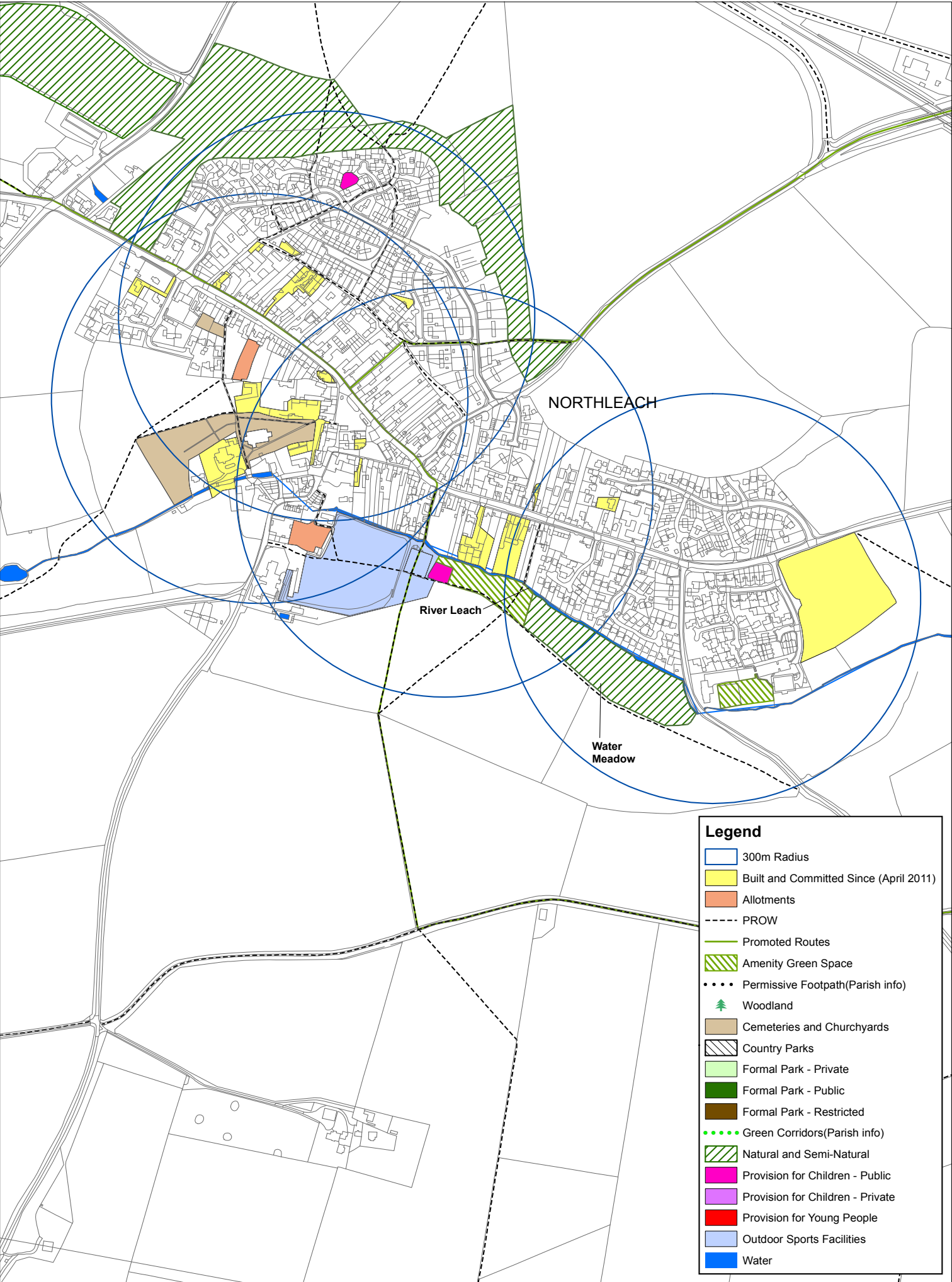
#### Country Parks

- There are no Country Parks in the middle of the Cotswold District.
- Investigate the provision of a Country Park in the middle Cotswold area.

#### Green Corridors, Popular Walks and Public Rights of Way:

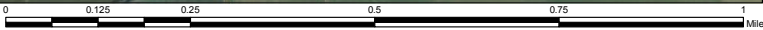
- Continue to monitor use as demand is increased.

# NORTHLEACH UPDATE 2016





# NORTHLEACH GREEN INFRASTRUCTURE 2017





## Open Spaces 4

**Stow-on-the-Wold****2011 Study Results**

The 2011 Open Space, Sport and Recreation Study results for Stow-on-the-Wold raised a number of specific issues for the area, these are listed below:

Typology	Comment
No Specific issues were raised	NA

**Additional Comments from the Town Council 2015**

Up to the year 2031 Stow-on-the-Wold is one of the 17 Principal Settlements allocated in the Cotswold District Council Local Plan 2011-31. During the period of the plan: Stow-on-the-Wold has been allocated 10 dwellings; By 2031 there will be 1,091 residential properties in the Development Boundary and 1,100 in the parish.

**Provision in the Local Plan 2011 - 2031 Reg 19 for Stow-on-the-Wold**

- **Number of dwellings** - Up to the year 2031 Stow-on-the-Wold, is one of the 17 Principal Settlements allocated in the Cotswold District Council Local Plan 2011 - 2031. As such, Stow-on-the-Wold has been allocated 10 dwellings in the plan period. S\_8A Stow Agricultural Services, Lower Swell Road (10 dwellings net)

**2011 v 2015 findings**

- Although the 2011 study did not raise any concerns for Stow-on-the-Wold the 2015 study reveals that there is a need to increase the amount of accessible open space in the town including the provision of natural and semi natural open spaces.

## 4 Open Spaces

### 2015 Study Results

The tables over the next few pages give an overview of the results from Stow-on-the-Wold Town Council 2015 regarding Open Spaces in the settlement. The Open Spaces covered are Allotments, Cemeteries and Churchyards, Amenity Green Space, Parks and Gardens, Semi Natural and Natural Green Spaces, Green Corridors and other areas of Open Space, such as playing fields and Sports pitches.

For each of the types (typology) of Open Space a table identifies the location of the space, the number, the accessibility and if appropriate the quality and size.

The Cotswolds District does not hold any Green Flag Awards, a national award that encourages the provision of good quality public parks and green spaces that are managed in environmentally sustainable way. However, it is thought that within the 17 settlements in the district there are parks that could meet the Green Flag standard. Therefore, the basic criteria questions of the Green Flag award relating to Parks have been included in the review of this study.

Each of the tables, where possible, provide a total number of square metres or hectares in each of the areas and whether they are within 300m or 2KM of the village.

If additional information has been made available by the Town Council, this has also been added.

### Allotments in Stow-on-the-Wold

**What are they?** Allotments includes community gardens, orchards and city urban farms.

**What additional benefits can they have?** Allotments are health benefits, social environmental

**Information from Stow-on-the-Wold Town Council** In the parish of Stow-on-the-Wold there is one allotment.

Typology	Quantity Standard	Accessibility	Existing Provision  Size and number	Quality Summary
<b>Allotments</b>  1) Adjacent to the cemetery	Recommended Number:  15 per 1,000 households  300 square yards or 250 square metres	Public Access	85 plots	<b>Essential</b> - Site is well maintained  E - High quality boundary  E - Access to water  E - Not considered to be safe & secure  E - No litter bins

## Open Spaces 4

Typology	Quantity Standard	Accessibility	Existing Provision Size and number	Quality Summary
				<b>Desirable</b> - Parking available D - No notice board D - Level informal paths D - No toilet X - Volunteer involvement X - No specific disabled access, but Level informal paths
<b>Restricted Access -: TOTAL AMOUNT OF ACCESSIBLE SPACE - 00.00 Ha</b>				

**Allotment Findings:**

**Quantity:** The predicted number of residential properties in Stow-on-the-Wold up to the year 2031 would suggest that, using the quantity standard there is enough provision within the parish for allotments.

**Accessibility:** The site is in public ownership and is therefore open to the public, but as space used by allotment members it is not considered to be an open space for all. Therefore, the site is discounted from contributing to total amount of accessible open space in Stow-on-the-Wold.

**Quality:** All of the **Essential criteria** for the Allotments is met, with the exception of the site considered not to be safe and secure and have no litter bins. Of the **Desirable criteria** the site has parking and has level, informal paths, but has no toilets or a notice board. The new **Quality questions** identify that the site has volunteer involvement, but no specific disabled access, but level informal paths.

**Cemeteries & Churchyards in Stow-on-the-Wold**

**What are they?** Urban burial grounds in the 19th century were originally envisaged as public open spaces, and were professionally designed to be attractive places to visit in their own right.

**What additional purpose can they have?** Regarded as public landscapes as well as functional burial places. Cemeteries have the potential to deliver as many amenity and ecological benefits as parks.

**Information from Stow-on-the-Wold Town Council**

Stow-on-the-Wold has two Cemeteries/Church Yards 1)The cemetery adjacent to the Fosseyway has approximately, fifty years left and 2) St Edmunds Church is closed.

## 4 Open Spaces

Typology	Quantity & Size	Accessibility	Quality Summary
<b>Cemeteries &amp; Church Yards</b>	No recommended National Standard	No recommended National Standard	<b>Essential</b> - 1) Parking 2) No parking
1)The cemetery adjacent to the Fosseway	1) 10595.05 m <sup>2</sup> / 1.059505 Ha	1) Public Access	E - Both sites have well kept grass
2) St Edmunds Church	2) 3533.27 m <sup>2</sup> / 0.353327 Ha	2) Public Access	E - Both sites clean & litter free
			<b>Desirable</b> - Both sites have seating
			D - Both sites have litter/dog bins
			D - Not considered to be part of a dog walk area
			X - Condition of sites very good
			X - No staff or volunteer involvement
			X - There is disabled access
Total amount of accessible space		14128.32m <sup>2</sup> / 1.412832 Ha	
Total amount of accessible space within 2 KM			
Total amount of accessible space within 300m		14128.32m <sup>2</sup> / 1.412832 Ha	

Although there is no Quantity, Accessibility or a number Standard set for Cemeteries and Churchyards, Stow-on-the-Wold's Cemeteries and Churchyards all have public access. The Quality standard was applied.

The Cemeteries and Churchyards met most of the essential criteria, apart from no parking facilities at 2) St Edmunds Church, but this was not highlighted as being a particular issue. Of the desirable criteria, most of the criteria was met. There are no toilets at either of the sites, but this was not raised as an issue of concern. Both areas are not considered to be a dog walking area.

The new Quality questions identify that the sites are in very good condition, they have disabled access. There is no staff and volunteer involvement at either of the sites.

### Amenity Green Space in Stow-on-the-Wold

**What are they ?** (most commonly but not exclusively in housing areas) including informal recreation spaces, green spaces in and around housing, domestic gardens and village greens.

## Open Spaces 4

**What additional purpose can they serve ?** Informal activities close to home or work, biodiversity, environmental education and awareness

### Information from Stow-on-the-Wold Town Council

There are three main amenity green spaces in Stow-on-the-Wold 1) QE2 Field, 2) King George's Field and 3) Upper & Lower Wall.

In addition, there are 11 amenity green spaces in Stow-on-the-Wold, these are 1) Broadwell Junction 2) Tesco's Green 3) Verge adjacent to Fosseyway 4) Raised plant bed 5) Fountain green 6) QE2(Cricket Ground) field 7) Stocks Green Village Green (VG43) 8) Upper and Lower Well Common Land (CM110) 9) Wraggs Row Common Land (CL107) 10) The Shubbery Common Land (CL108) 11) Entrance to Kings Georges Field 12 ) King George's Field 13) Bell Inn and verge Common Land (CL109) 14) Bottom Back of Walls 16) Grass opposite the Catholic Church 16) Grass in front of Chaimberlain House

Typology	Quantity & Size	Accessibility	Quality Summary
<b>Amenity Green Space</b>	1) 43025.59m <sup>2</sup> /4.302559 Ha	1) Public access	X - Condition of sites good or very good
1) QE2 Field,	2)	2) Public access	X - No toilets
2) King George's Field	19609.55m <sup>2</sup> /1.960955 Ha	3) Public access	X - Disabled access at 2) and 3)
3) Upper & Lower Wall.	3) 1543.69m <sup>2</sup> / 0.154369 Ha		
Total amount of accessible space		64178.83m <sup>2</sup> / 6.417883 Ha	
Total amount of accessible space within 2km radius and 2km - counted as part of 300m		* King George's Field sits within the 300 m	
Total amount of accessible space within 300m		64178.83m <sup>2</sup> / 6.417883 Ha	

### Amenity Green Space Findings

**Quantity, Size and Accessibility:** There are three Amenity Green Spaces in Stow-on-the-Wold. All three sites have public access with the total size of the sites measuring 6.417883 Ha.

**Quality:** All of the sites are in good or very good condition, there is disabled access at King George's Field & Upper and Lower Well, there are no toilets at any of the sites or staff/volunteer involvement. No particular concerns regarding amenity green spaces in Stow-on-the-Wold were raised.

### Recommendations: Amenity Green Spaces

- Continue to maintain the areas to their existing standard



## 4 Open Spaces

### Parks and Gardens

There are no Parks and Gardens in Stow-on-the-Wold.

### Semi Natural and Natural Green Spaces

There are no semi natural and natural green spaces in Stow-on-the-Wold.

### Country Parks

There are no Country Parks in Stow-on-the-Wold.

### Green Corridors in Stow-on-the-Wold

**What are they?** They include river and canal banks, cycle ways and public rights of way as well as accessible green space in urban fringes.

**What additional purpose can they serve ?** Walking, cycling or horse riding, Leisure purposes or travel Opportunities for wildlife migration

### Information from Stow-on-the-Wold Town Council

There three main Green Corridors in Stow-on-the-Wold 1) the Bumpy Road to Maugersbury and 2) The road to the Wells. There is also four popular walks and Public Rights of Way, QE2 Field, Monachs Way, Footpath to Swell and the Footpath to Broadwell

Typology	Quantity	Accessibility	Quality Summary
<b>Green Corridors</b>  1) Bumpy Road to Maugersbury  2) Road to the Wells	There is no requirement to set catchments for green corridors due to their linear nature.	1) Public Access  2) Public Access	<b>Essential</b> - Both are clean and litter free  E - Both have nature features  E - 1) does not have a level surface, (2) does  <b>Desirable</b> - Both have well kept grass  D - Both have flowers/trees/shrubs  D - Appropriate signage NA  D - 1)No dog/litter bins 2) Dog/litter bins  X - 1) toilet 2) No toilet

## Open Spaces 4

Typology	Quantity	Accessibility	Quality Summary
			X - Both do not have staff or volunteer involvement  X - 1) No disabled access 2) disabled access
Total amount of accessible space		9,056m	
Total amount of accessible space within 2km (includes Public Rights of Way with 2km radius)		9,056m	
Total amount of accessible space within 300m		NA	

**Findings Green Corridors**

**Quantity:** There is no requirement to set catchments for green corridors due to their linear nature.

**Accessibility:** Both sites have public access

**Quality:** Of the Essential criteria, both sites are clean and litter free and have natural features, trees and verges. The road to the Wells has a level surface, but the road to Mangersbury does not.

The desirability of a multi use green corridor for purposes other than walking, for example cycling is possible on the road to Wells, but not the Mangersbury, Road. There are litter/dog bins on the Road to the Wells, but not the Mangersbury, Road. However, it does have, unlike the road to the Wells a toilet. Both sites do not have appropriate signage.

The new Quality questions revealed that there is disabled access along the road to the Wells, but none along the Mangersbury, Road. There is no staff or volunteer involvement at either site.

**Other Areas of Open Space**

What	Quantity	Accessibility
Playing Field	1 Site - NA	School Site - limited  *information from desktop assessment

## 4 Open Spaces

### Accessible Open Space in Stow-on-the-Wold

The national standards ANGst (Accessible Natural Green Space) have been used as a basis to measure the size and distance of the Open Space typologies in each of the 17 settlements that are known to have public access.

For Stow on the Wold it was necessary to draw six, 300m circles to cover the main urban area and one 2km circle for the area.

The table below only counts sites that are available to the public. The type, number and size of the Open Space is logged. Then the sites are broken down into sites that are within the 300m radius and within 2km radius . To avoid counting a site twice if it is within the 300m zone it is not counted in the 2km zone.

Typology	Number & Size	Within 300m radius	Within 2KM radius
<b>Allotments</b>	NA	NA	NA
<b>Churchyards and Cemeteries</b>	2 Sites = 14128.32m <sup>2</sup> / 1.412832 Ha	2 Sites = 14128.32m <sup>2</sup> / 1.412832 Ha	0
<b>Amenity Green Space</b>	3 Sites = 64178.83m <sup>2</sup> / 6.417883 Ha	3 Sites = 64178.83m <sup>2</sup> / 6.417883 Ha	* The QE2 Field is counted in the 300m
<b>Parks &amp; Gardens</b>	0	0	0
<b>Semi Natural and Natural Green Spaces</b>	0	0	0
<b>Country Park</b>	0	0	0
<b>Green Corridors</b>	NA	NA	NA
<b>Other Green Spaces</b>	NA	NA	NA
<b>Total = 7.830715Ha</b>	Five sites measuring 7.830715 Ha	Five sites in 300 m radius measuring 7.830715 Ha	QE2 field is counted in 300m radius

## Open Spaces 4

**Accessible Open Space**

Requirement Location	Requirement Met?	Largest Site &
1 site 2 hectares 300m radius = (QE2 Field) ) 19609.55m <sup>2</sup> /1.960955 Ha	Yes King George's Field	43025.59m <sup>2</sup> /4.302559 Ha
1 site 20 hectares 2km radius =	No	

By applying the standard, Stow-on-the-Wold has a sufficient amount of Open Space within a 300m radius. The QE2 field to the west of the settlement provides over two hectares and King George's Field to the east of Stow-on-the-Wold providing nearly two hectares of space on that side of the town. However, the Open Space map for Stow-on-the-Wold identifies that some areas, in particular the south east of the settlement does not have any accessible open space within a 300m radius. There is no accessible open space of 20 hectares within a two KM radius.

## 4 Open Spaces

### Recommendations/Actions in light of Evidence from Stow-on-the-Wold Town Council

#### Recommendations Allotments:

- Continue to monitor demand in other areas (by recording requests to the Town Council) and support plans to increase provision where additional demand is identified.
- Investigate the provision/need for toilets
- Investigate the provision/need for notice boards
- Investigate the provision/need for greater security of site if considered to be a concern.

#### Recommendations Cemeteries and Churchyards

- Investigate need/opportunities for volunteer involvement.

#### Amenity Green Spaces

- Continue to maintain the areas to their existing standard

#### Parks and Gardens:

- There are no parks/gardens in Stow-on-the-Wold
- Investigate the need/desire and for a park in Stow-on-the-Wold

#### Semi Natural and Natural Green Spaces:

- There are no semi natural and natural open spaces in Stow-on-the-Wold
- Look to increase the provision of natural and semi natural open space especially within 300m of the village.

#### Country Parks:

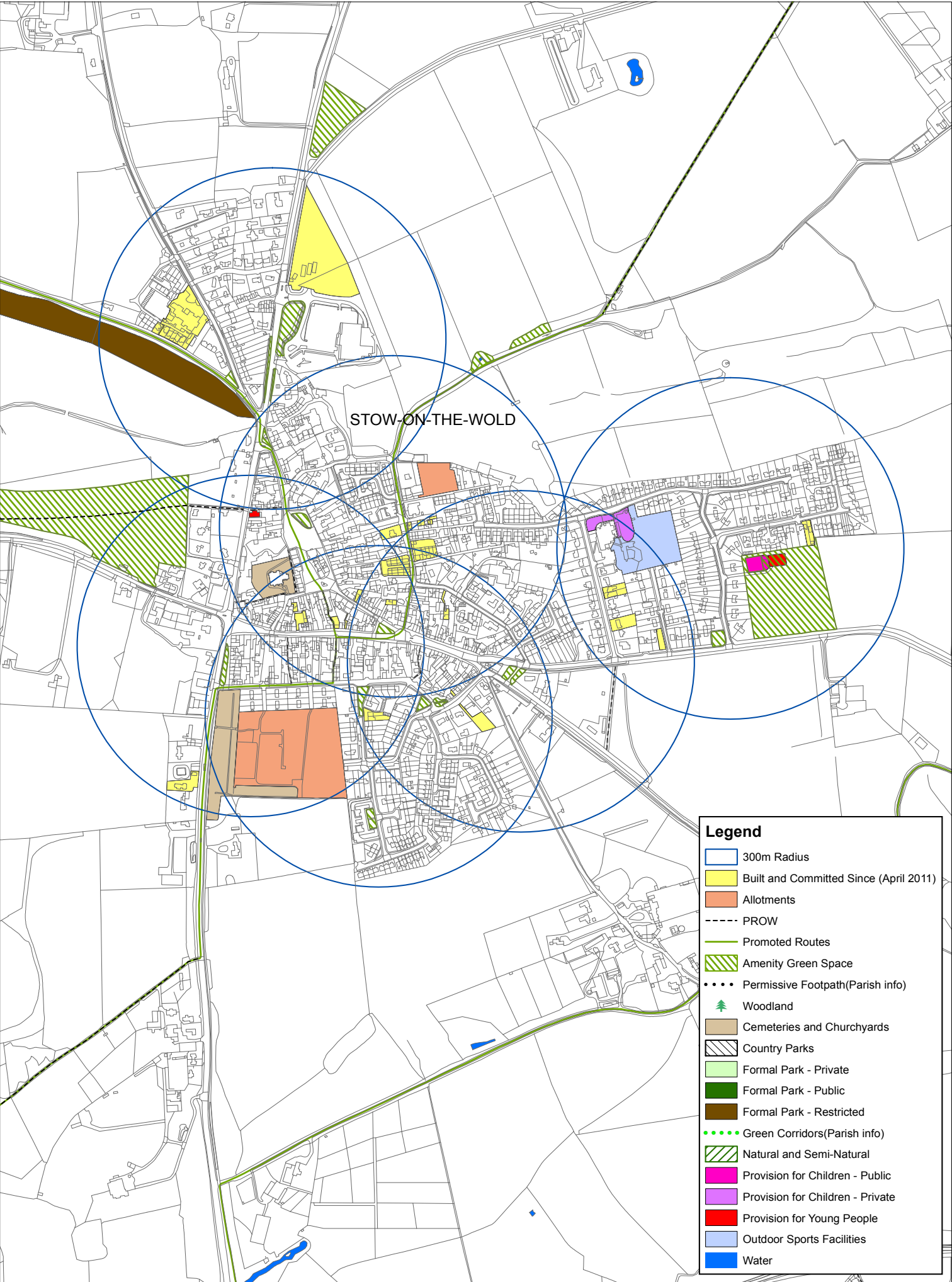
- There are no Country Parks in the middle of the Cotswold District.
- Investigate the provision of a Country Park in the area.

#### Popular Walks and Public Rights of Way/ Green Corridors:

- Continue to monitor use as demand is increased.
- Investigate need/provision of signs.



# STOW-ON-THE-WOLD UPDATE 2016



**Legend**

300m Radius

Built and Committed Since (April 2011)

Allotments

PROW

Promoted Routes

Amenity Green Space

Permissive Footpath(Parish info)

Woodland

Cemeteries and Churchyards

Country Parks

Formal Park - Private

Formal Park - Public

Formal Park - Restricted

Green Corridors(Parish info)

Natural and Semi-Natural

Provision for Children - Public

Provision for Children - Private

Provision for Young People

Outdoor Sports Facilities

Water



STOW-ON-THE-WOLD GREEN INFRASTRUCTURE 2017





## Upper Rissington

### 2011 Study Findings

The 2011 Open Space, Sport and Recreation Study did not include Upper Rissington. Therefore there no previous work can be made reference to.

### Provision in the emerging Local Plan 2011 - 2031 Reg 19 for Upper Rissington

- Number of dwellings - Upper Rissington is part of a former air base (RAF Little Rissington) Despite its current poor level of facilities, it is identified as a principle settlement in the Development Strategy. This is because of the large number of outstanding housing commitments which will effectively double the size of the settlement. The Victory Fields development will help to meet the housing needs in the district, particularly for affordable housing. No other sites are allocated for the development at Upper Rissington during the plan period.

### 2015 Summary Upper Rissington Parish Council

At the time of the initial research carried out for this study in 2015 much of Upper Rissington was under construction. Therefore, details regarding the amount of Open Space, allotments and other key features had not been finalised. Therefore, at this stage, a full assessment of the Open Spaces in Upper Rissington has not been undertaken. It is hoped that when the work for the Green Infrastructure commences, a review of the Open Spaces can be conducted at the same time. However, it is known that surrounding Upper Rissington to a 2 KM radius is 13,189 meters of Public Rights of Way.

In 2016 a meeting with the Parish Council revealed two key issues regarding open space for Upper Rissington. These were greater access to the countryside surrounding the settlement and the ongoing maintenance and management of the open spaces once construction of the settlement had been complete.



# UPPER RISSINGTON INFRASTRUCTURE 2017





## Open Spaces 4

### South Cotswold Sub-area

#### Town and Parish Surveys - overview of findings of Open Spaces for the South Cotswold sub-area

The South Cotswold sub-area contains seven Principal Settlements, which are Cirencester, Down Ampney, Fairford, Kemble, Lechlade, South Cerney and Tetbury. A map of these settlements can be found at the end of this section. A green 2km radius has been drawn around each of the settlements to illustrate the wider area reviewed for the open spaces section of the strategy.

#### Allotments Findings

There are 11 allotment sites within the seven Principal Settlements. Provision is, on the whole, very good with the largest number of allotment sites located in Cirencester. At the time of the survey the waiting lists and demand for all the allotments were varied. Cirencester reported that there were 34 people on the waiting list and demand out-stripped supply by approximately 25% for individual and community plots. Fairford opened an allotment site in late 2015, its only one, but there is still a need for more in the town.

The localised issues raised by each of the settlements regarding allotments are covered in the individual sections for these settlements.

#### Allotments - Future Action

- Provide new allotments in areas of demand
- Continue to monitor and maintain existing allotments using the Open Space criteria for allotments.
- Where additional provision is found, make sure new sites are level with easily accessible footpaths.

#### Cemeteries and Church Yards

There are 16 cemeteries and Church Yards in the South Cotswold sub-area, although there are general concerns about the amount of burial site provision. Indeed, there were localised issues raised by each of the settlements regarding Cemeteries and Church Yards, which are covered in each of the individual sections for the respective settlements.

#### Cemeteries and Church Yards - Future Action

- Investigate the possibility of providing more Cemetery Space in the South Cotswold sub-area.
- Continue to monitor and maintain existing Church Yards and cemeteries using the Open Space criteria for cemeteries and Church Yards.

#### Amenity Green Space

There are 22 Amenity Green Space in the South Cotswold sub-area. None of the parish or town councils highlighted any major issues regarding Amenity Green Space. Any localised issues raised by the settlements are covered in the individual sections for these settlements.

#### Amenity Green Space - Future Action



## 4 Open Spaces

- Investigate the possibility and need for creating more Amenity Green Spaces in all areas.
- Continue to monitor and maintain existing Amenity Green Spaces using the Open Space criteria for Amenity Green Spaces.

### Parks and Gardens - Findings

No issues were raised regarding Parks and Gardens in the South Cotswold sub-area, but provision varies. Cirencester has two of the biggest parks, which are The Abbey Grounds and St Michael's Field. However, Tetbury has 12 parks, which is the most of any settlement in the District. However, the smaller settlements of Kemble and Down Ampney have none. Lechlade does not have a park, although the Riverside Park is located directly adjacent to the southern edge of the town's Development Boundary on the opposite side of the River Thames, approximately 170m from Lechlade town centre but within Swindon Borough.

### Parks and Gardens - Future Action

- Investigate and provide, where needed, new Parks/gardens in areas where new development is planned.
- Continue to monitor and maintain existing Parks and Gardens using the Open Space criteria for Parks and Gardens.

### Natural and Semi Natural Green Spaces

There are numerous Natural and Semi Natural Open Spaces with the South Cotswold sub-area, some with and some without public access. Where there are localised issues raised by each of the settlements, these are covered in each of the Parishes individual sections.

### Natural and Semi Natural Green Spaces – Future Action

- Look to increase the provision of natural and semi natural open space especially within 300m of each settlement.
- Continue to monitor and maintain existing Natural and Semi Natural Green Spaces using the Open Space criteria for Natural and Semi Natural Green Spaces.

### Country Parks – Findings

There are three country parks in the South Cotswold sub-area, two of which are in Cirencester and one is located between Fairford and Lechlade.

### Local Nature Reserves - Findings

There are two Country Parks in the Cotswold District, one of these are in the South Cotswold sub-area the Eric Richardson and Phyllis Amey Nature Reserve in Lechlade.

### Popular Walks and Public Rights of Way/ Green Corridors – Findings

Access to Green Corridors is mixed within the seven Principal Settlements in the South Cotswold sub-area.

## Open Spaces 4

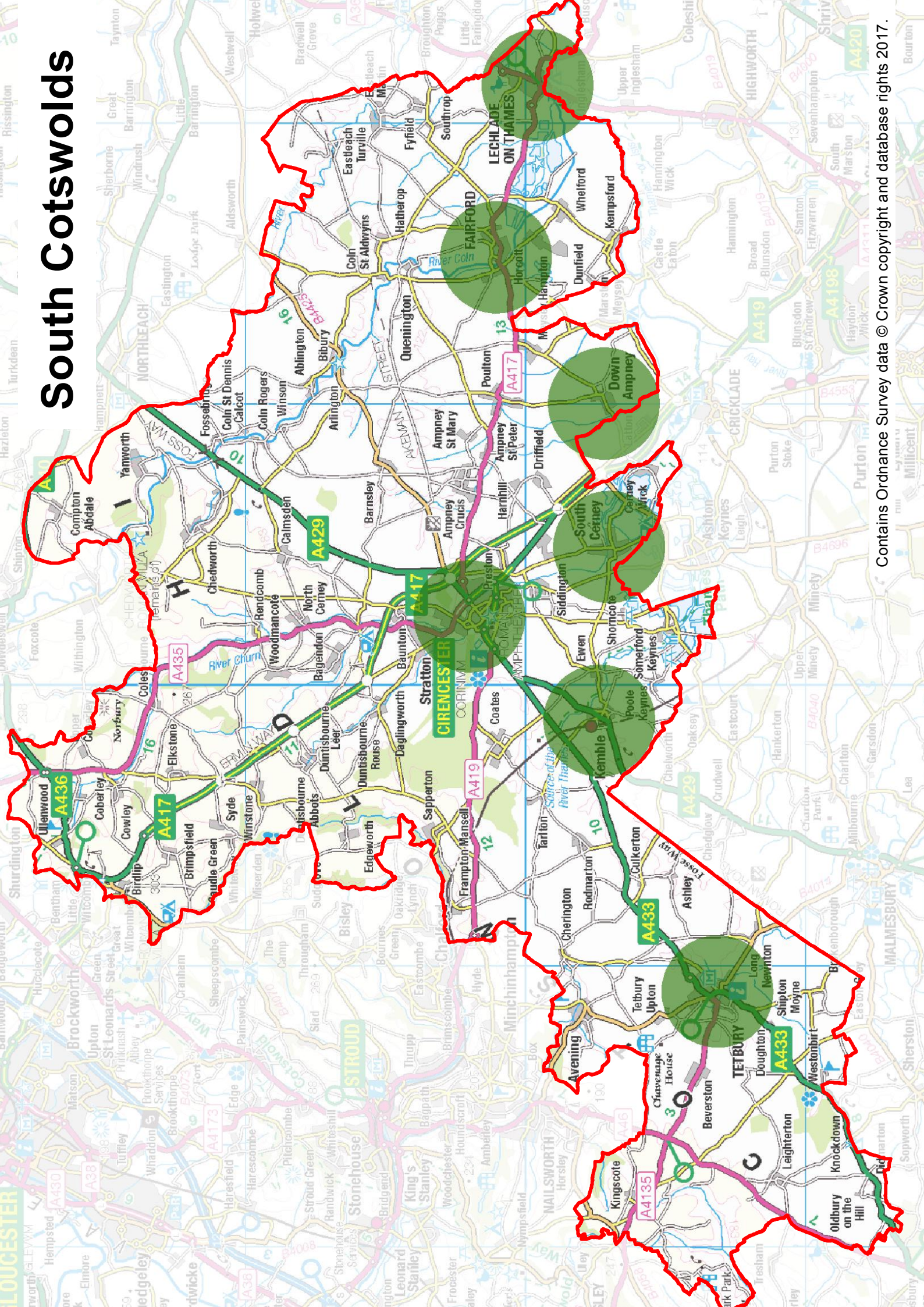
Public Rights of Way also serve as important Green Corridors. In a 2km radius of all seven settlements there is a total of 78,357m of Public Rights Way. Tetbury has the most with 22,522m compared to Cirencester with only 11,780m. There were localised issues raised by each of the settlements regarding Public Rights of Way, which are covered in the individual sections for these settlements.

### **Popular Walks and Public Rights of Way/ Green Corridors – Actions**

- Investigate the possibility of creating better links and circular walks in and around and to each of the settlements.
- Continue to monitor and maintain existing Green Corridors/Public Rights of Way using the Open Space criteria for Popular Walks and Public Rights of Way/ Green Corridors.



# South Cotswolds





## Open Spaces 4

## Cirencester

## 2011 Study Results

The 2011 Open Space, Sport and Recreation Study results for Cirencester raised a number of specific issues for the area, these are listed below:

Typology	Comment
<b>Parks and Gardens</b>	Improve pedestrian routes and cycleways between East Cirencester and St Michael's Park and Abbey Grounds. Provide a new park within East Cirencester if the opportunity arises.
<b>Natural and Semi Natural Green Spaces &amp; Country Parks</b>	<p>Sympathetic management techniques should be practised at sites of importance for nature conservation and biodiversity. Consideration should also be given to prohibiting public access to sites which are particularly sensitive in terms of the habitats that they offer to ensure their long term sustainability. The priorities of the biodiversity action plan should be used to inform these decisions</p> <p>Improve pedestrian routes and cycle routes to Abbey Grounds and Cirencester Park from the west and east of the town. Incorporate natural open space within Abbey grounds and within any new park provided in the east of Cirencester.</p>
<b>Amenity Green Space</b>	Improve access routes to Abbey Grounds and Cirencester Park for pedestrians and cyclists. Provide a new park in east Cirencester.
<b>Allotments</b>	Provide new allotments, particularly the west

## Provision in the Local Plan 2011 - 2031 Reg 19 for Cirencester

- Number of dwellings** - Up to the year 2031 Cirencester town, is one of the 17 Principal Settlements allocated in the Cotswold District Council Local Plan 2011 - 2031. As such, Cirencester town has been allocated 20 dwellings in the plan period. C\_17 42 - 54 Querns Lane (6 dwellings net); C\_39 Austin Road Flats (9 dwellings net) and C\_101A Magistrates Court (5 dwellings net).



## 4 Open Spaces

- **Local Green Spaces** - One site in Cirencester has been put forward for Local Green Space designation in the Local Plan via extensive work from Cirencester Town Council. The site is known as The Humpty Dumps (Policy EN3 LGS5) .
- **Infrastructure** - Provision of additional play space and facilities for children and young people. Improvement of the functionality, amenity, safety biodiversity, environment and attractiveness of City Bank. Improving pedestrian /cycle linkages between Chesterton, the Amphitheatre and the town centre

### 2011 v 2015 findings

- There is an opportunity to improving pedestrian routes, access routes and cycleways. Provide new allotments. Look to increase cemetery provision.

## Open Spaces 4

## 2015 Study Findings

The tables over the next few pages give an overview of the results from Cirencester Town Council 2015 regarding Open Spaces in Cirencester Parish. The Open Spaces covered are Allotments, Cemeteries and Churchyards, Amenity Green Space, Parks and Gardens, Semi Natural and Natural Green Spaces, Green Corridors and other areas of Open Space such as Playing fields and Sports pitches.

For each of the types (typology) of Open Space a table identifies the location of the space, the number, the accessibility and if appropriate the quality and size.

The Cotswolds District does not hold any Green Flag Awards, a national award that encourages the provision of good quality public parks and green spaces that are managed in environmentally sustainable way. However, it is thought that within the 17 settlements in the district there are parks that could meet the Green Flag standard. Therefore, the basic criteria questions of the Green Flag award relating to Parks have been included in the review of this study.

Each of the tables, where possible, provide a total number of square metres or hectares in each of the areas and whether they are within 300m or 2km of the village.

If additional information has been made available by the Town Council, this has also been added.

## Allotments in Cirencester

**What are they?** Allotments can include community gardens, orchards and city urban farms

**What additional benefits can they have?** Health benefits as well as social and environmental

## Information from Cirencester Town Council

- There are 34 people on the waiting list.
- Demand outstrips supply by approximately 25 per cent for individual and community plots.

Typology	Quantity Standard	Accessibility	Existing Provision Size and number	Quality Summary
<b>Allotments</b>	15 per 1,000 households	1) Yes	1) 31	<b>Essential</b> - All the sites are well maintained
1) City Bank	300 square yards or 250 square metres	2) Yes	2) 14	
2) Chesterton			3) 33	E - All the sites high quality boundaries
			4) 3	

## 4 Open Spaces

Typology	Quantity Standard	Accessibility	Existing Provision Size and number	Quality Summary
3) Kingshill South		3) No		E - Access to mains water at (3)
4) Beeches Small Holding		4) Yes	Within the four Town Council owned sites there are 81 managed plots.	E - All are considered Safe & secure
5) Purley Road Community Site				E - All have no litter bins
				<b>Desirable</b> - Parking (1) near by, (2) & (3).
				D - Level surfaces & footpaths (1), (2) & (3)
				D - No toilets
				X - Volunteer Involvement
				X - No disabled access
<b>Restricted Access -: TOTAL AMOUNT OF ACCESSIBLE SPACE - 00.00 Ha</b>				

### Additional Information

- \* Note - There are five Council run allotments, in Cirencester, there are an additional six allotment sites dotted around the Cirencester area under private or Trust ownership. Information about the allotments in private or Trust ownership are missing from this study as the information was not available at the time.

### Allotment Findings

**Quantity:** Although the strategy was unable to establish the number of privately run plots in the parish, there is clearly demand for allotments demonstrated by Cirencester Town Council's waiting list.

## Open Spaces 4

**Accessibility:** The site is in public ownership and is therefore open to the public, but as space used by allotment members it is not considered to be an open space for all. Therefore, the site is discounted from contributing to total amount of accessible open space in Cirencester.

**Quality:** All of the **Essential criteria** for the Allotments is met, with the exception of the sites not having dog/litter bins and mains water not accessible at any of the sites apart from the new allotments at Kingshill South. Of the **Desirable criteria** most of the sites have parking near by. (1) City Bank and (2) Chesterton and (3) Kingshill South are level sites with footpaths, but none of the sites have access to a toilet.

### Cemeteries & Churchyards in Cirencester

**What are they?** Urban burial grounds in the 19th century were originally envisaged as public open spaces, and were professionally designed to be attractive places to visit in their own right.

**What additional purpose can they have?** Regarded as public landscapes as well as functional burial places. Cemeteries have the potential to deliver as many amenity and ecological benefits as parks.

### Information regarding Cirencester Cemeteries & Churchyards

There are five cemeteries/churchyards in the Cirencester town. St John's the Baptist and the cemetery on Watermoor Road is closed. There are 31 years of provision left at Chesterton Cemetery.

Typology	Quantity & Size	Accessibility	Quality Summary
<b>Cemeteries &amp; Churchyards</b>	No recommended standard	No standard	* Site visits were made by CDC to
1) Chesterton Cemetery	1) 52485.28m <sup>2</sup> / 5.248528 Ha	1) Public access	1) Chesterton Cemetery
2) St John's the Baptist, Cirencester	2) 6140.05m <sup>2</sup> / 0.614005 Ha	2) Public access	2) St John's the Baptist, Cirencester
3) Church of the Holy Trinity (Watermoor Church)	3) 6279.62m <sup>2</sup> / 0.627962 Ha	3) Public access	3) Church of the Holy Trinity (Watermoor Church)
4) Cemetery on Watermoor Road	4) NA	4) No public access	
5) Quaker Meeting House	5) NA	5) No public access	
Total amount of accessible space		64904.95m <sup>2</sup> / 6.490495 Ha	
Total amount of accessible space within 2km		NA	



## 4 Open Spaces

Typology	Quantity & Size	Accessibility	Quality Summary
Total amount of accessible space within 300m	64904.95m <sup>2</sup> / 6.490495 Ha		

### Cemetery and Churchyards Findings:

Although there is no Quantity, Accessibility or a number Standard set for Cemeteries and Churchyards, the majority of Cirencester Cemeteries and Churchyards have public access. The Quality standard was applied. The Cemeteries and Churchyards met most of the essential criteria, apart from parking which is limited. Of the desirable criteria, again most of the criteria was met. All of the sites were in excellent condition. A new location for a cemetery is being sought in the Cirencester area.

**What are they ?** (most commonly but not exclusively in housing areas) including informal recreation spaces, green spaces in and around housing, domestic gardens and village greens.

**What additional purpose can they serve ?** Informal activities close to home or work, biodiversity, environmental education and awareness

**Information from Cirencester Town Council** There are numerous amenity green spaces, including various grass verges, all have public access - refer to map

Typology	Quantity & Size	Accessibility	Existing Provision  Size and number	Quality Summary
Amenity Green Space	Refer to map	Refer to map	Refer to map	Numerous - refer to map
TOTAL AMOUNT OF ACCESSIBLE SPACE - (Refer to Map)				

### Amenity Green Space Findings

**Quantity:** Refer to map **Accessibility:** Refer to map **Quality:** Refer to map

### Parks and Gardens in Cirencester

**What are they?** Includes urban parks, formal gardens and country parks

**What additional purpose can they serve ?** Informal recreation, Community events

### Information from Cirencester Town Council

## Open Spaces 4

There are three main Parks/Gardens in Cirencester 1) The Abbey Grounds, 2) St Michael's Park and 3) Cirencester Park. The Abbey Grounds and St Michael's Park are publicly owned and Cirencester Park is owned privately, but access to the park is available.

Typology	Quantity & Size	Accessibility	Quality Summary	Green Flag Guidance
Parks & Gardens	1) 101.20m <sup>2</sup> /10120 Ha	1) Public Access	Essential: (1) & (2) Flowers, trees & shrubs	Do you believe the park to be a welcoming place? Yes. Do you believe the park to be healthy, safe & secure? Yes
1) Abbey Grounds	2) 27514.85m <sup>2</sup> /2.751485 Ha	2) Public Access	E (1)&(2) litter & graffiti free, well kept grass	
2) St Michael's Park	3) NA	3) Public Access		
3) Cirencester Park *				
Total amount of accessible space = 10122.75 Ha				
Total amount of accessible space within 2KM NA				
Total amount of accessible space within 300m 10122.75 Ha				

\* Cirencester Park is open to the public free of charge, 8am to 5pm every day, throughout the year, for visitors on foot and on horseback by permission of the 9th Earl and Countess Bathurst, and the trustees of The Earl's Fund

### Parks and Gardens findings

**Quantity, Size and Accessibility:** There are three Parks and Gardens in Cirencester. Two of the three Parks have public access, both of these sites and measure, in total 10122.75 Ha and are within a 300m radius.

**Quality:** All of the **Essential criteria** is met. Both 1) The Abbey Grounds & 2) St Michael's Park meet most of the **Desirable criteria**. St Michael's Park is closed to dogs. The new **Quality criteria** identifies that both sites have staff and volunteer involvement and disabled access.

### Semi Natural and Natural Green Spaces in Cirencester

**What are they?** They include publicly accessible woodlands, urban forestry, scrub, grasslands, commons, meadows), wetlands, open running water and wastelands.

**What additional purpose can they serve ?** They can be spaces for recreation, but a clear distinction should be made between those natural spaces which are accessible to the public and those are not, as many sites can also be Key Wildlife Sites and (SSSIs) Scientific Sites of Special Interest.

## 4 Open Spaces

### Information from Cirencester Town Council

Land at the Amphitheatre is maintained on behalf of English Heritage by Cirencester Town Council, in addition areas of land nearby are managed by Cirencester Town Council as land owner on behalf of the NHS Trust.

Typology	Quantity & Size	Access	Quality Summary
<b>Semi Natural and Natural Green Spaces</b>	1) 1489 Ha	1) Public Access	<b>Essential</b> - All sites are clean & maintained.
1) The City Bank Recreation Ground	2) 1.46 Ha	2) Public Access	E - All have natural features
2) The Nursery site at City Bank	3) 4347 Ha	3) Public Access	E - Footpaths (1) & (3)
3) Cirencester Amphitheatre	4) 0.58 Ha	4) Public Access	<b>Desirable</b> - All sites there is parking available (2) on street.
4) The Opportunity Group Land			D - All sites have trees & shrubs
			D - (1) & (2) have dog bins
			D - (1) is a dog walking area
			D - All have information or signage
			X - (1) & (3) have part disabled access
			X - All are staffed
Total amount of accessible space		5838.04 Ha	
Total amount of accessible space within 2 KM			NA
Total amount of accessible space within 300m		5838.04 Ha	

### Semi Natural and Natural Green Spaces Findings

**Quantity, Size and Accessibility:** There are four Semi Natural and Natural Green Spaces in Cirencester. All four of the sites have public access with the total size of the sites measuring 5838.04 Ha and are within a 300 metre radius.

**Quality:** Of the **Essential criteria**, all the sites have natural features and are clean and and maintained. There are footpaths at 1) The City Bank Recreation Ground and 3) Cirencester Amphitheatre. The **Desirable criteria** reveals that all of the sites have parking, trees and shrubs, and information or signage. (1) The City Bank Recreation Ground is a dog walking area. The new **Quality criteria** identify that all of the sites have staff involvement and that 1) The City Bank Recreation Ground and 3) Cirencester Amphitheatre have disabled access in parts.

## Open Spaces 4

**Country Parks in Cirencester**

**What are they?** Includes urban parks, formal gardens and country parks

**What additional purpose can they serve ?** Informal recreation, Community events

**Information from Cirencester Town Council**

There two Country Parks in Cirencester, Kingshill Country Park and Four & Two Acres Field.

Typology	Quantity & Size	Access	Quality Summary
<b>Country Parks</b>	1) 4273 Ha	1) Public Access	Essential - Both are clean and litter free
1) Kingshill Country Park	2) 1.584 Ha	2) Public Access	E - Both have nature features
2) 4 and 2 Acres Field			Desirable - Both have on street parking
			D - Both have appropriate signage
			D - Both have dog walking area
			D - Both have dog/litter bins
			X - Both don't have toilets
			X - Both have well kept grass
			X - (1) has level footpaths
			X - Disabled access (1)
			X - Both are staffed
Total amount of accessible space		4274.58 Ha <sup>2</sup>	
Total amount of accessible space within 2km		NA	
Total amount of accessible space within 300m		4274.58 Ha <sup>2</sup>	

**Country Parks Findings**

**Quantity, Size Accessibility:** There are two Country Parks in Cirencester, all of the sites have public access and measure in total 4274.58 Ha .

**Quality:** 1) Kingshill Country Park, 2)4 and 2 Acres Field meet all of the **Essential criteria** and the **Desirable criteria**. The sites also meet the majority of the new **Quality questions**.

## 4 Open Spaces

### Green Corridors in Cirencester

**What are they?** They include river and canal banks, cycle ways and public rights of way as well as accessible green space in urban fringes.

**What additional purpose can they serve ?** Walking, cycling or horse riding, Leisure purposes or travel Opportunities for wildlife migration

### Information from Cirencester Town Council

Typology	Quantity & Size	Access	Quality Summary
<b>Green Corridors</b>  1) River Churn and Embankments  2) Old Railway line from Prospect Place to Kingshill School	Numerous	1) Public Access  2) Public Access	<b>Essential</b> - Both are clean and litter free  E - (2) has footpaths with a level surface  E - Both have nature features  <b>Desirable</b> (2) has well kept grass  D - Both have flowers/trees/shrubs  D - Both do not have signage  D - Both, in part can be used by pedestrians and cyclists  D - Both have dog/litter bins  X - Both do not have a toilet  X - 1) No disabled access 2) disabled access  X _ (1) in part (2) has staff & volunteer involvement
Total amount of accessible space way with 2 KM radius)		11,780 metres	(includes Public Rights of
Total amount of accessible space within 2 KM		11,780 metres	
Total amount of accessible space within 300m		NA	

### Findings Green Corridors



## Open Spaces 4

**Quantity:** There is no requirement to set catchments for green corridors due to their linear nature, but there numerous, including 1) River Churn and Embankments 2) Old Railway line from Prospect Place to Kingshill School.

**Accessibility:** There is 11,780 metres of Public Rights of Way within Cirencester and the 2 KM radius. Quality: Of the Essential criteria, both sites are clean and litter free and have natural features. 2) Old Railway line from Prospect Place to Kingshill School has footpaths with level surface. Of the Desirable criteria, both sites, in parts can be used for walking as well as cycling. The dog/litter bins on both sites signage and flowers, trees and shrubs. The new Quality criteria identifies that there is disabled access along Old Railway line from Prospect place to Kingshill School but not along the River Churn site and both volunteer and staff involvement at the railway line from prospect place to Kingshill School.

### Additional Questions & Answers:

- Are the open spaces you have sufficient to meet local need ? **Yes. The main issue being to ensure that all the open spaces are well maintained with improved access for all.**
- Do you plan to open any new facilities/open spaces in the near future? **No**
- Have you closed any open spaces in recent times? **No**
- Are any of your open spaces under threat from such factors as under use, a lack of finance for maintenance? **No**
- Does your parish hold any certificates for its open spaces or take part in any national events for example Green Flag for its parks, Love Parks week or Britain in Bloom? **Yes. Love Parks week**
- Any further general comments about open space provision in your area or the district as a whole? **Not answered.**

## 4 Open Spaces

### Other Areas of Open Space

What and Quantity	Access
1) Chesterton Primary School = 0.015 Sq Km	1)School site - Not Counted
2) Watermoor School, Kingshill Lane = 0.079 Sq Km	2)School site - Not Counted
3) Watermoor School Trinity Road = 0.004 Sq Km	3)School site - Not Counted
4) Victoria Road Playing Field a) fenced b) = 0.022 Sq Km/ not fenced = 0.011 Sq Km	4) a) Not counted b) Public access - counted
5) Powells School(not including wooded area?) = 0.018 Sq Km	5)School site - Not Counted
6) Deer Park School = 0.06 Sq Km	6)School site - Not Counted
7) Cirencester College = 0.023 Sq Km	7)Limited Access - Not Counted
8) Royal Agricultural University = 0.144 Sq Km	8)Limited Access - Not Counted
9) Cirencester Rugby Ground = 0.059 Sq Km	9)Limited Access - Not Counted
10) Cirencester Football Club = 0.039 Sq Km	10)Limited Access - Not Counted
11) Cirencester Skate Park & area next to. = 0.003 sq Km	11) Counted
12) Cirencester Bowls Club = 0.0014 Sq Km	12) Limited to members - Not Counted
13) Kingshill School = 0.064 Sq Km	13)School site - Not Counted
	*information from desktop assessment

## Open Spaces 4

**Accessible Open Space in Cirencester**

The national standards ANGst (Accessible Natural Green Space) have been used as a basis to measure the size and distance of the Open Space typologies in each of the 17 settlements that are known to have public access.

For Cirencester, including Stratton, it was necessary to draw 30, 300 meter circles to cover the main urban area and one 2KM circle for the area.

The table below only counts sites that are available to the public. The type, number and size of the Open Space is logged. Then the sites are broken down into sites that are within the 300 meters radius and within 2KM radius . To avoid counting a site twice if it is within the 300 metre zone it is not counted in the 2KM zone.

Typology	Number & Size	Within 300m radius	Within 2KM radius
<b>Allotments</b>	NA	NA	NA
<b>Churchyards and Cemeteries</b>	3 Sites = 64904.95m <sup>2</sup> / 6.490495 Ha	3 Sites = 64904.95m <sup>2</sup> / 6.490495 Ha	NA
<b>Amenity Green Space</b>	Refer to map	Refer to map	Refer to map
<b>Parks &amp; Gardens</b>	2 Sites = 10122.75 Ha	2 Sites = 10122.75 Ha	NA
<b>Semi Natural and Natural Green Spaces</b>	4 Sites = 5838.04 Ha	4 Sites <sup>2</sup> = 5838.04 Ha	NA
<b>Country Parks</b>	2 Sites = 4274.58 Ha	2 Sites 4274.58 Ha	NA
<b>Green Corridors</b>	NA	NA	NA
<b>Other Green Spaces</b>	2 Sites = 1.4 Ha	1 Site = 1.4 Ha	0
<b>Total 20244.66 Ha</b>	There are 13 sites in total these measure 20244.66 Ha	All of the 13 sites are within or adjacent to the 300m radius	NA

**Accessible Open Space**

Requirement Location	Requirement Met?	Largest Site &
1 site 2 hectares 300m radius =	Yes	10120 Ha (The Abbey Grounds)
1 site 20 hectares 2km radius =	Yes	10120 Ha (The Abbey Grounds)

## 4 Open Spaces

The amount of accessible open space in Cirencester is sufficient within a 300m radius and a 2KM radius. There are numerous sites across the town, with the largest at the centre, The Abbey Grounds. There are other smaller areas under 2 Hectares dotted around Cirencester in the estates to the east and west of the town centre.

## Open Spaces 4

**Recommendations/Actions in light of Evidence from Cirencester Town Council****Allotments:**

- Continue to monitor demand (by recording requests to the Town Council) and support plans to increase provision where additional demand is identified.
- Where additional provision is found, make sure new sties are level with easily accessible footpaths.
- Investigate the provision/need for litter/dog bins.
- Investigate the provision/need for toilets.

**Recommendations Cemetery and Churchyards:**

- Continue to maintain the areas to their existing standard.
- Seek a location for a new cemetery.

**Amentiy Green Spaces:**

- Continue to maintain the areas to their existing standard.
- Continue to support The Humpty Dumps (Policy EN3 LGS5)
- Look to increase the provision where appropriate.

**Parks and Gardens:**

- In accordance with the the Green Flag guidance 1) The Abbey Grounds and 2) St Michael's Park most of its basic criteria. Therefore, they might be eligible for Green Flag status, the possibility should be investigated.

**Semi Natural and Natural Green Spaces:**

- Continue to maintain the areas to their existing standard.
- Look to increase the provision of natural and semi natural open space where appropriate.

**Country Parks:**

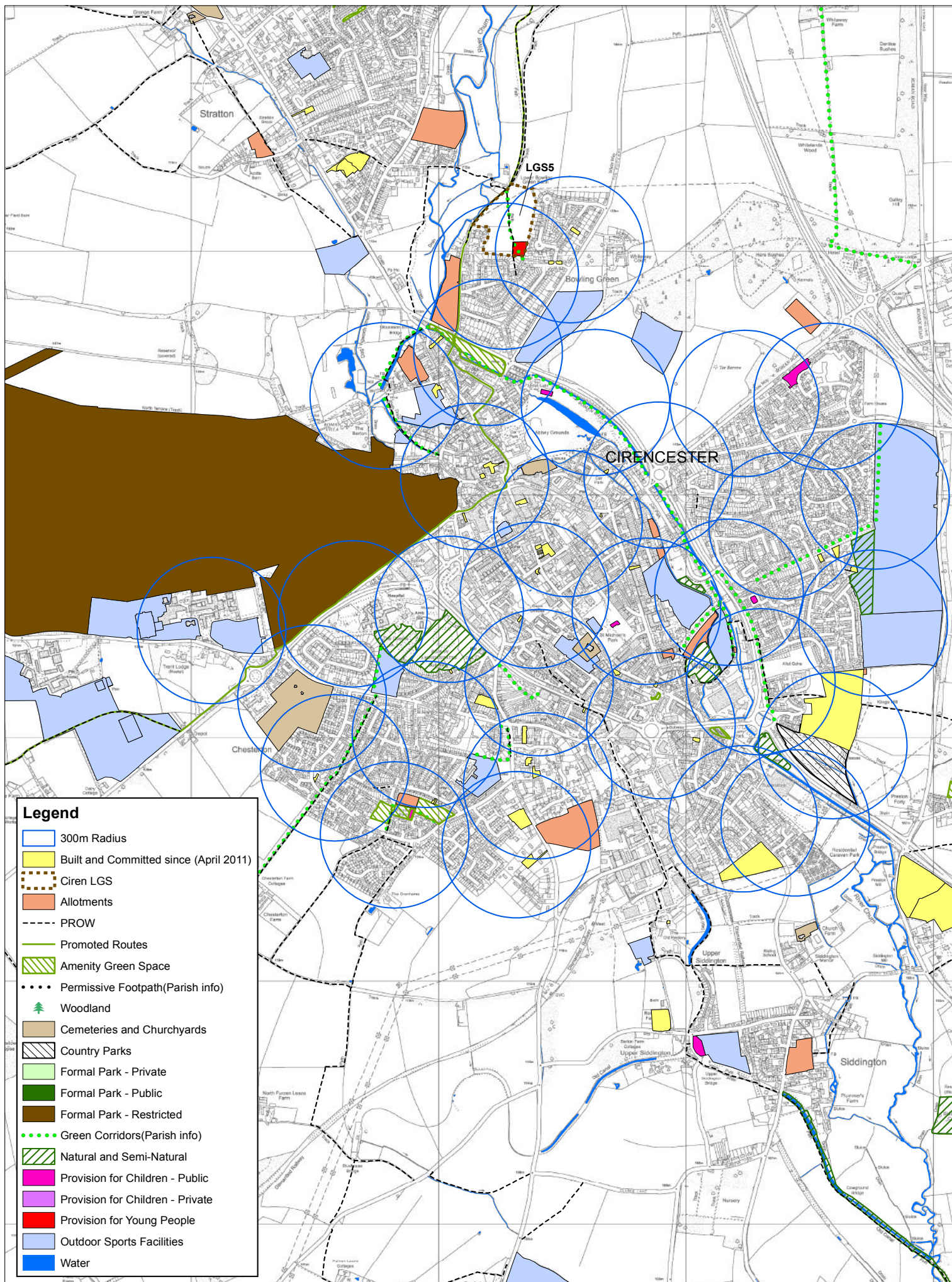
- Continue to maintain the areas to their existing standard.

**Popular Walks and Public Rights of Way/ Green Corridors:**

- Continue to monitor use as demand is increased.



# CIRENCESTER PUBLIC OPEN SPACES 2016





CIRENCESTER GREEN INFRASTRUCTURE 2017





## 4 Open Spaces

### Down Ampney

#### 2011 Study Results

The 2011 Open Space, Sport and Recreation Study results for Down Ampney raised a number of specific issues for the area, these are listed below:

Typology	Comment
Parks and Gardens	Improve links between local service centres and formal parks by improving transport routes (where possible) and providing cycle paths. Focus on settlements that do not currently access to informal open spaces.
Natural and Semi Natural Green Space and Country Parks	Increase the provision of natural and semi natural open space
Amenity Green Space	Provision of Amenity Green Spaces should be provided as part of any new development. Increase access to the countryside by providing pedestrian walkways and cycle routes from settlements to areas of accessible countryside
Allotments	Provide new allotments

#### Provision in the Local Plan 2011 - 2031 Reg 19 for Down Ampney

- **Number of dwellings** - Up to the year 2031 Down Ampney, is one of the 17 Principal Settlements allocated in the Cotswold District Council Local Plan 2011 - 2031. As such, Down Ampney has been allocated 28 dwellings in the plan period. DA\_2 Dukes Field (10 dwellings net); DA\_5A Buildings at Rocktree Farm (8 dwellings net) and DA\_8 Land at Broadleaze (10 dwellings net).
- **Infrastructure** - Provision of allotments, Improvement of footpaths in and around the village, including a pedestrian crossing in the village centre, provision of new facilities for young people. Improvements in links to the Folley and Down Ampney Pits and existing pocket parks; and provision of or contributions to a new natural open space or pocket park.

#### 2011 v 2015 findings

- There is a opportunity to increase semi natural and natural open spaces

#### 2015 Study Findings

The table gives an overview of the results of a meeting with members of Down Ampney Parish Council in 2016 . The Open Spaces covered are Allotments, Cemeteries and Churchyards, Amenity Green Space, Parks and Gardens, Semi Natural and Natural Green Spaces, Green Corridors and other areas of Open Space, such as playing fields and Sports pitches.

## Open Spaces 4

The table provides a total number of square metres or hectares in each of the areas and whether they are within 300m or 2km of the village.

If additional information has been made available, by the Parish this has also been added.

### Accessible Open Space in Down Ampney

The national standards ANGst (Accessible Natural Green Space Standard) have been used as a basis to measure the size and distance of the Open Space typologies in each of the 17 settlements that are known to have public access.

For Down Ampney it was necessary to draw three, 300 meter circles to cover the main urban area and one 2km circle for the area.

The table below only counts sites that are available to the public. The type, number and size of the Open Space is logged. Then the sites are broken down into sites that are within the 300 meters radius and within 2km radius . To avoid counting a site twice if it is within the 300 metre zone it is not counted in the 2km zone.

Typology	Total Number & Size	Within 300m radius	Within 2km radius
<b>Allotments</b>	1 Community garden = 1244m <sup>2</sup> 0.1244 Ha	1 Community garden = 1244m <sup>2</sup> 0.1244 Ha	NA
<b>Churchyards and Cemeteries</b>	1 = 2725m <sup>2</sup> /0.2725 Ha	1 = 2725m <sup>2</sup> /0.2725 Ha	0
<b>Amenity Green Space</b>	4 = 4.144416 Ha	4 = 4.144416 Ha	0
<b>Parks &amp; Gardens</b>	0	0	0
<b>Semi Natural and Natural Green Spaces</b>	0	0	0
<b>Country Parks</b>	0	0	0
<b>Green Corridors</b>	7,388 meters of PROW in 2km of Down Ampney	7,388 meters of PROW in 2km of Down Ampney	7,388 meters of PROW in 2km of Down Ampney
<b>Other accessible Spaces</b>	1 Football ground - 23412.34m <sup>2</sup> 1 tennis court - 633m <sup>2</sup> 1 Multi Use Games Area - 552m <sup>2</sup> 1 Play area - 1102m <sup>2</sup>	1 Football ground - 23412.34m <sup>2</sup> 1 tennis court - 633m <sup>2</sup> 1 Multi Use Games Area - 552m <sup>2</sup> 1 Play area - 1102M <sup>2</sup>	0

## 4 Open Spaces

Typology	Total Number & Size	Within 300m radius	Within 2km radius
<b>Total</b> = 7.11125 Ha	In total there are ten accessible sites  = 7.11125 Ha	There are 10 sites within the 300m radius.  These sites measure = 7.11125 Ha	

### Accessible Open Spaces

Requirement Location	Requirement Met?	Largest Site &
1 site 2 hectares 300m radius =	Yes	3.800556 Ha (Stubs Copse)
1 site 20 hectares 2km radius =	No	

By using the Open Space standard Down Ampney has, overall, a sufficient amount of Open Space within a 300m radius, Stubs Copse to the south of the village. Down Ampney does not have access to a site over 20 Ha in a 2km radius.



## **Recommendations/Actions in light of Evidence from Down Ampney Parish Council**

### **Allotments:**

- Continue to monitor demand (by recording requests to the Parish Council) and support plans to increase provision where additional demand is identified.

### **Cemeteries & Churchyards:**

- Continue to maintain the areas to their existing standard.
- Investigate the proposed extension to the grave yard.

### **Amenity Green Spaces:**

- Continue to maintain the areas to their existing standard

### **Parks and Gardens:**

- There are no parks/gardens in Down Ampney

### **Semi Natural and Natural Green Spaces:**

- There are no semi natural and natural green spaces in Down Ampney
- Look to increase the provision of natural and semi natural open space especially within 300m of the village.

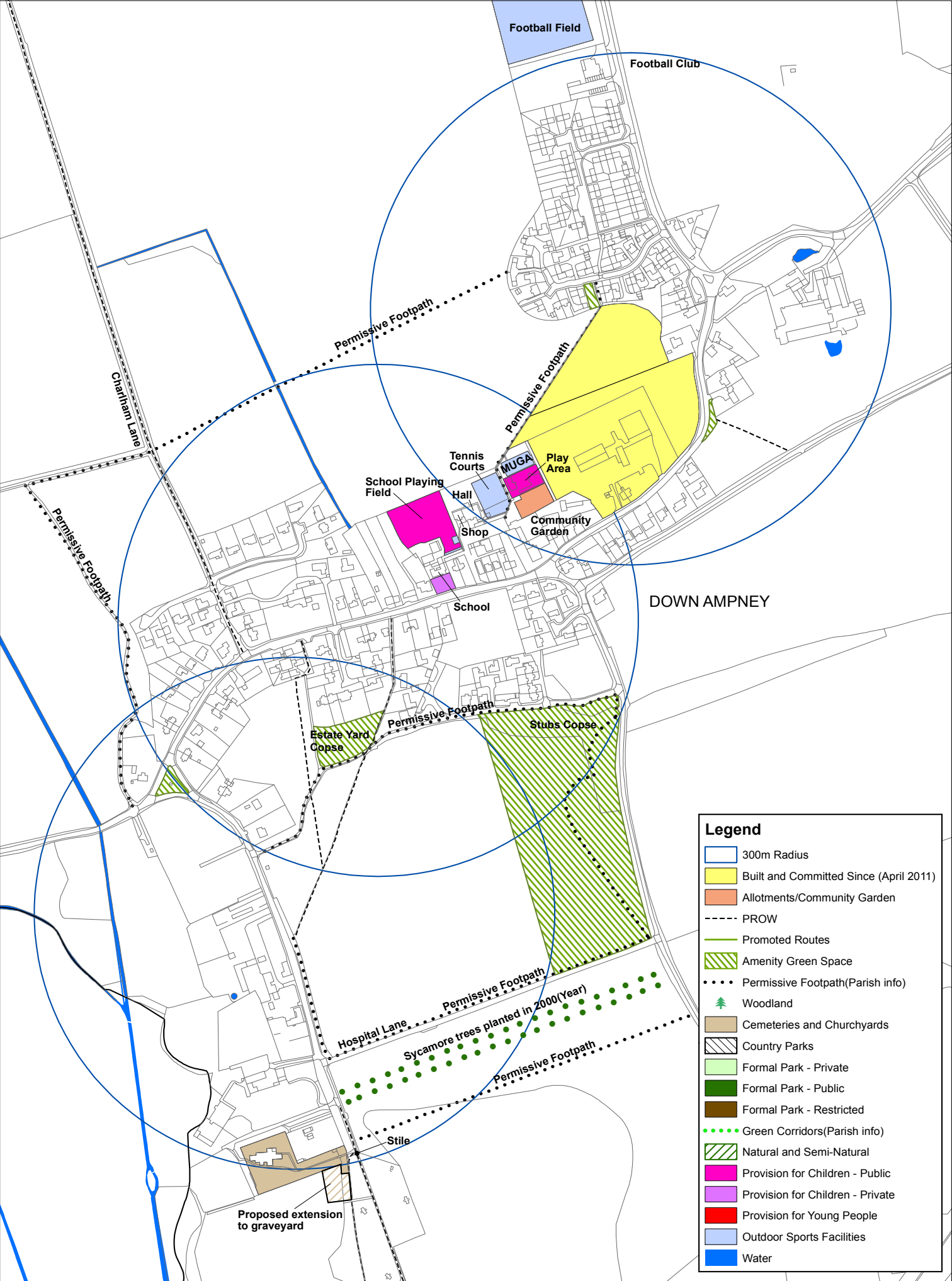
### **Country Parks:**

- There are no Country Parks in the Down Ampney Area. However, Down Ampney is in close proximity to the Cotswold Water Park.

### **Popular Walks and Public Rights of Way/ Green Corridors:**

- Continue to monitor use especially in newly created permissive footpaths.

# DOWN AMPNEY UPDATE 2016



**Legend**

300m Radius

Built and Committed Since (April 2011)

Allotments/Community Garden

PROW

Promoted Routes

Amenity Green Space

Permissive Footpath(Parish info)

Woodland

Cemeteries and Churchyards

Country Parks

Formal Park - Private

Formal Park - Public

Formal Park - Restricted

Green Corridors(Parish info)

Natural and Semi-Natural

Provision for Children - Public

Provision for Children - Private

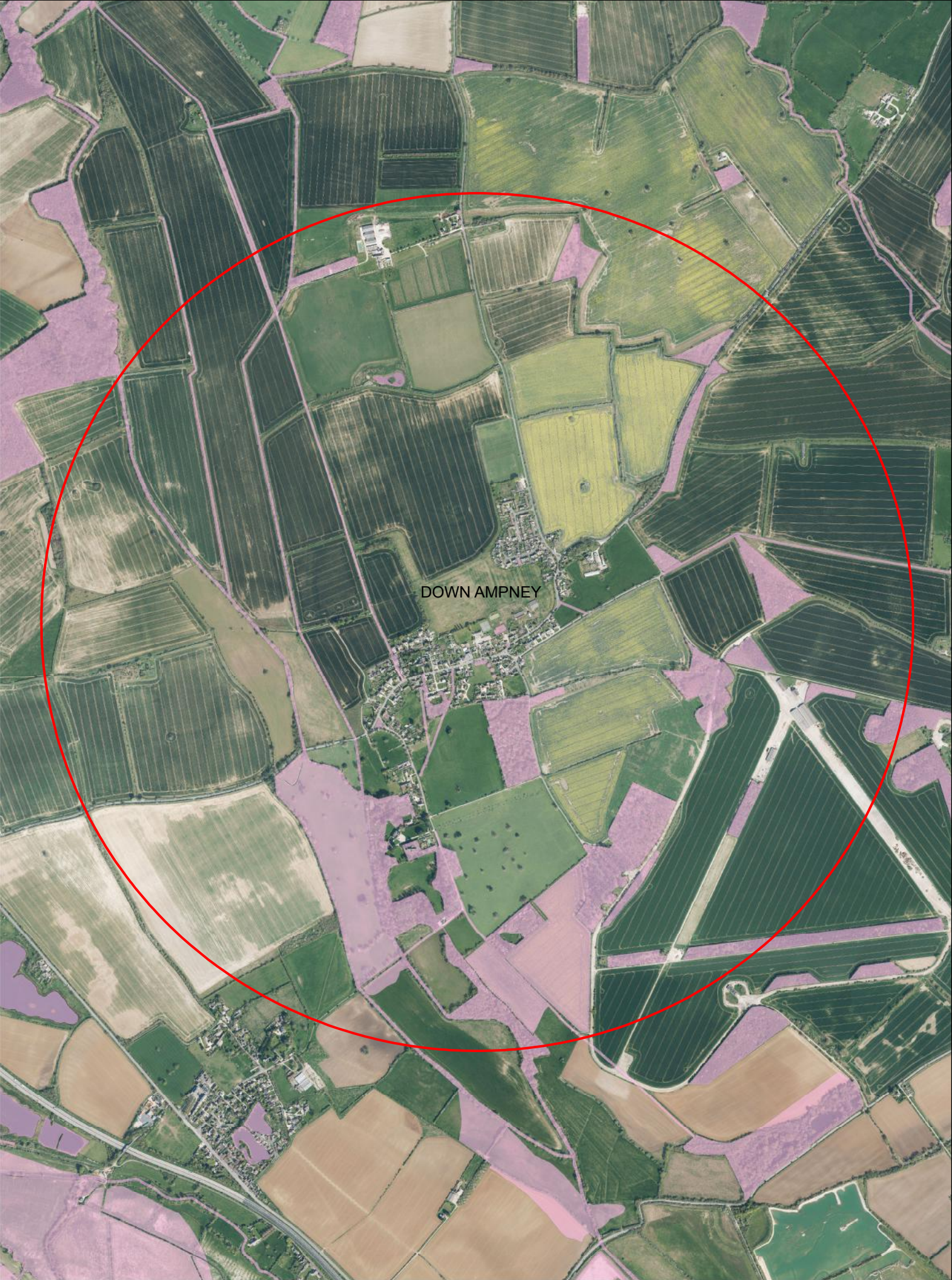
Provision for Young People

Outdoor Sports Facilities

Water



# DOWN AMPNEY GREEN INFRASTRUCTURE 2017





## 4 Open Spaces

### Fairford

#### 2011 Study Results

Overall, the 2011 Open Space, Sport and Recreation Study for Fairford did not highlight any major concerns for the parish.

A number of points were raised about natural and semi natural open spaces and allotments. These are listed below:

Typology	Comment
<b>Natural and Semi Natural Open Space and Country Parks</b>	Sympathetic management techniques should be practiced at sites of importance for nature conservation and biodiversity. Consideration should also be given to prohibiting public access to sites which are particularly sensitive in terms of the habitats that they offer to ensure their long term sustainability. The priorities of the biodiversity action plan should be used to inform these decisions.
<b>Allotments</b>	Provide new allotments in <b>Fairford</b> .

#### Additional Comments from Town

Access to much of the open spaces in the district relies very heavily on the goodwill of the landowner granting access to the countryside. It is a county-wide issue, but seems particularly pertinent in Fairford.

#### Provision in the Local Plan 2011 - 2031 Reg 19 for Fairford

- **Number of dwellings** - Up to the year 2031 Fairford, is one of the 17 Principal Settlements allocated in the Cotswold District Council Local Plan 2011 - 2031. As such, Fairford has been allocated 77 dwellings in the plan period. F\_35B Land behind Milton Farm and Betterons Close (49 dwellings net); and F\_44 Land to rear of Faulkner Close, Horcott (28 dwellings net).
- **Infrastructure** - Improvements to the provision of a footpath and cycle links between Fairford and the riverside, the Cotswold Water Park and the canal route; the provision of suitable land for allotments and the provision of suitable land for a burial ground.

#### 2011 v 2015 findings

- The 2015 study reveals that there is a need to increase provision of accessible open space and natural and semi natural open space in Fairford. New allotments have been provided, there remains a need for more.



## Open Spaces 4

### 2015 Study Findings

The tables over the next few pages give an overview of the results from Fairford Town Council regarding Open Spaces in Fairford. The Open Spaces covered are Allotments, Cemeteries and Churchyards, Amenity Green Space, Parks and Gardens, Semi Natural and Natural Green Spaces, Green Corridors and other areas of Open Space.

For each of the types (typology) of Open Space a table identifies the location of the space, the number, the accessibility and if appropriate the quality and size.

The Cotswolds District does not hold any Green Flag Awards, a national award that encourages the provision of good quality public parks and green spaces that are managed in environmentally sustainable way. However, it is thought that within the 17 settlements in the district there are parks that could meet the Green Flag standard. Therefore, the basic criteria questions of the Green Flag award relating to Parks have been included in the review of this study.

Each of the tables, where possible, provide a total number of square metres or hectares in each of the areas and whether they are within 300m or 2KM of the village.

If additional information has been made available, by the parish this has also been added.

## 4 Open Spaces

### Allotments in Fairford

**What are they?** Allotments can include community gardens, orchards and city urban farms

**What additional benefits can they have?** Allotments are health benefits, social environmental

#### Information from Fairford Town Council

There is one allotment site in Fairford, which opened in 2015. The site will has 20 plots, 10 as part of the new housing development and 10 for existing residents of Fairford, the later will be managed by the Town Council. There are 26 people on the waiting list for the Town Council managed allotments.

Typology & Number	Quantity Standard	Accessibility	Existing Number & Provision	Quality Summary
<b>Allotments</b>	15 per 1,000 households		1) site - 20 allotments	Opened after survey closed
1) Fairford Gate	300 square yards or 250 square metres			
<b>Restricted Access -: TOTAL AMOUNT OF OPEN SPACE - 00.00 Ha</b>				

### Cemeteries & Churchyards in Fairford

**What are they?** Urban burial grounds in the 19th century were originally envisaged as public open spaces, and were professionally designed to be attractive places to visit in their own right.

**What additional purpose can they have?** Regarded as public landscapes as well as functional burial places. Cemeteries have the potential to deliver as many amenity and ecological benefits as parks.

#### Information from Fairford Town Council

Overall the condition of the sites is good, if not excellent. The Town Council are looking for a new burial ground as the section it looks after at St Mary's has approximately 40 spaces left, suitable sites have been found.

Typology & Number	Quantity & Size	Accessibility	Quality Summary
<b>Cemeteries &amp; Churchyards</b>	1) 9652.22m <sup>2</sup> / 0.965222 Ha	1) Public access 2) Public access	<b>Essential</b> - None of the sites have parking

## Open Spaces 4

Typology & Number	Quantity & Size	Accessibility	Quality Summary
1) St Mary's Church - 2) United Church - 3) St Thomas' -	2) 362.94m <sup>2</sup> / 0.036294 Ha 3) 2023.61m <sup>2</sup> / 0.202361 Ha	3) Public access	<p>E - All sites have well kept grass</p> <p>E- All are clean &amp; litter free</p> <p><b>Desirable</b> - None of the sites have toilets</p> <p>D - (1), (3) &amp; (4) have seating</p> <p>D - (2), (3) &amp; (4) have litter &amp; dog bins</p> <p>X - (1) &amp; (4) excellent condition, (2) &amp; (3)</p> <p>X - (1), (3) &amp; (4) have disabled access</p> <p>X - (1) has a PROW (2), (3) &amp; (4) are not considered to be part of a dog walking area</p> <p>X - All have both staff and volunteer involvement</p>
Total amount of accessible space		12038.77m <sup>2</sup> / 1.203877 Ha	
Total amount of accessible space within 2 KM		NA	
Total amount of accessible space within 300m		12038.77m <sup>2</sup> / 1.203877 Ha	

**Cemetery and Churchyards Findings:**

Although there is no Quantity, Accessibility or a number Standard set for Cemeteries and Churchyards, Fairford's Cemeteries and Churchyards all have public access. The Quality standard was applied. The Cemeteries and Churchyards met most of the **Essential criteria**, apart from parking facilities, but this was not identified as being a particular issue. Of the **Desirable criteria**, again most of the criteria was

## 4 Open Spaces

met. There are no toilets at any of the sites, but again this was not raised an issue of concern. The new **Quality questions** identify that all the sites are in excellent condition, that all of the four sites have disabled access and that all of the sites have both staff and volunteer involvement.

One of the four sites, 1) St Mary's Church, has a Public Right of Way running through it and as such considered to be part of a dog walking area.

### Amenity Green Space in Fairford

**What are they ?** (most commonly but not exclusively in housing areas) including informal recreation spaces, green spaces in and around housing, domestic gardens and village greens.

**What additional purpose can they serve ?** Informal activities close to home or work, biodiversity, environmental education and awareness

### Information from Fairford Town Council

An amenity space is due to be fully enabled once the development is complete at Fairford Gate, along the Milking Path.

Typology	Quantity & Size	Accessibility	Quality Summary
<b>Amenity Green Space</b>	1) 2608m <sup>2</sup> / 0.2608 Ha	1) Public access	X - (1) - (5) sites are in good condition
1) St Mary's Drive (2 sites) 2608m <sup>2</sup> /	2) 996m <sup>2</sup> / 0.0996 Ha	2) Public access	X - (1) - (5) There is staff involvement - grass is cut by contractor
2) Park Close	3) 388.13m <sup>2</sup> / 0.038813 Ha	3) Public access	
3) The Quarry -	4) 1176.95m <sup>2</sup> / 0.117695 Ha	4) Public access	X -None of the sites have a toilet
4) Faulkners Close -	5) NA	5) Public access	
5) Milking Path, Fairford Gate (Not complete at time of survey)		6) (Not complete at time of survey)	X - (1) - (5) have disabled access
Total amount of accessible space = 5169.08m <sup>2</sup> / 0.516908 Ha			
Total amount of accessible space within 2 KM		NA	
Total amount of accessible space within 300m = 5169.08m <sup>2</sup> / 0.516908 Ha			

### Amenity Green Space Findings



## Open Spaces 4

**Quantity, Size and Accessibility:** There are five Amenity Green Spaces in Fairford. All five sites have public access with the total size of the sites measuring 0.516908 Ha.

**Quality:** All of the sites are in good condition, they all have staff involvement and disabled access. No particular concerns regarding amenity green spaces in Fairford were raised.

### Parks and Gardens in Fairford

**What are they?** Includes urban parks, formal gardens and country parks

**What additional purpose can they serve ?** Informal recreation, Community events

### Information from Fairford Town Council

There is one Park in Fairford, The Walnut Tree. The Town Council lease part of the Walnut Tree Field and have installed play equipment. The Town Council pay a contractor to cut the grass in the entire field and pay a grounds-keeper to keep it free from litter. The Councillors check the play equipment on a weekly basis.

Typology	Quantity & Size	Accessibility	Quality Summary	Green Flag Guidance
<b>Parks and Gardens</b>  1) Walnut Tree Field, The Croft	12062.22m <sup>2</sup> / 1.206222 Ha	1) Public access	<b>Essential</b> - Has flowers, trees and shrubs  E - Is litter and graffiti free  E - Has well kept grass  <b>Desirable</b> - There is no parking  D - There is no toilet  D - There are no dog bins  D - There are no footpaths	- Do you believe the park to be a welcoming place? Yes  - Do you believe the park to be healthy, safe & secure? Yes  - Do you believe the park to be well maintained? Yes  - Is there community involvement in the management of the park? Yes

## 4 Open Spaces

Typology	Quantity & Size	Accessibility	Quality Summary	Green Flag Guidance
			D - Site is level D - There is seating X - There is no disabled access X - There is paid & volunteer involvement	- Are any events held at the park? Yes, Fairfest, Fairford's music festival
Total amount of accessible space		12062.22m <sup>2</sup> / 1.206222 Ha		
Total amount of accessible space within 2 KM		NA		
Total amount of accessible space within 300m		12062.22m <sup>2</sup> / 1.206222 Ha		

### Parks and Gardens findings

**Quantity, Size and Accessibility:** There is one Park/Garden in Fairford. The one site has public access measuring at total of 1.206222 Ha. The site is centrally located.

**Quality:** All of the essential criteria was met. Of the desirable criteria Walnut Tree is considered to be level and have seating. It does not have dedicated parking, a toilet, dog bins or footpaths, but a lack of these facilities were not raised a particular issue of concern. The new Quality questions identify that the site has both staff and volunteer involvement, but disabled access was difficult.

### Semi Natural and Natural Green Spaces in Fairford

**What are they?** They include publicly accessible woodlands, urban forestry, scrub, grasslands, commons, meadows), wetlands, open running water and wastelands.

**What additional purpose can they serve ?** They can be spaces for recreation, but a clear distinction should be made between those natural spaces which are accessible to the public and those are not, as many sites can also be Key Wildlife Sites and (SSSIs) Scientific Sites of Special Interest.

### Information from Fairford Town Council

Some of the River Coln river bank is a Public Right of Way, but most stretches of it are privately owned and not accessible. In 2014 Fairford Town Council had the path around the lake 102 and 102a designated as a Community Asset in 2014, the council lease the path on an annual basis. The remaining lakes are privately owned, but known to be Semi Natural and Natural Green Spaces areas.

## Open Spaces 4

Typology	Quantity & Size	Accessibility	Quality Summary
<b>Semi Natural and Natural Green Spaces</b>	1)The River Coln, 2) Horcott lakes (102) (102a) 3) Lake 104, 103 & 103a	1) Liner route (not counted) 2) Public access, Liner route (not counted) * See Public Rights of Ways 3) <b>No public access</b>	<b>Essential</b> - (1) In parts are know to be clean & maintained. (2) good (3) poor.  E - All have natural features  <b>Desirable</b> - None of the sites have parking  D - All sites have trees & shrubs  D - (1) & (2) have dog bins
Total amount of accessible space		NA	
Total amount of accessible space within 2 KM		NA	
Total amount of accessible space within 300m		NA	

**Semi Natural and Natural Green Spaces Findings**

**Quantity, Size and Accessibility:** There are three Semi Natural and Natural Green Spaces in Fairford. The Accessibility of these spaces are counted within the Green Infrastructure section.

**Quality:** Of the **Essential criteria**, all the sites have natural features. In terms of cleanliness and maintenance The River Coln is known to well maintained, in parts. The Horcott lakes (102), are considered to be good, but lakes 104, 103 & 103a are rated as poor.

The **Desirable criteria** reveals that none of the sites have parking, but they are available for dog walking and 1)The River Coln, 2) Horcott lakes (102) have dog/litter bins. All of the sites have trees and shrubs as well as information and signage.

The new Quality criteria identify that only 1) The River Coln is considered to have disabled access in parts.

**Country Parks in Fairford**

**What are they?** Includes urban parks, formal gardens and country parks

## 4 Open Spaces

**What additional purpose can they serve ?** Informal recreation, Community events

### Information from Fairford Town Council

There is one Country Park in the Fairford area, Bowmoor.

Typology	Accessibility Standards		Quality Summary
<b>Country Parks</b>  1) Bowmoor			<b>Essential</b> - Has level footpaths  E - Has nature features  <b>Desirable</b> - Has parking  D - Has appropriate signage  X - Does not have toilets  X Is clean and litter free  X - Staff or volunteer involvement not known.
<b>Notes : *In November 2016 access to Bowmoor was extended</b>			

### Country Parks Findings

**Quantity:** Refer to map **Accessibility:** Public access in parts - refer to map

**Quality:** Bowmoor meets of the **Essential criteria**, having level footpaths and natural features. Both of the **Desirable criteria** is also met as the site has parking and appropriate signage. The new quality questions identify that site is clean and litter free, and has appropriate signage. There are no toilets and the level of staff and volunteer involvement was not known.

### Green Corridors in Fairford

**What are they?** They include river and canal banks, cycle ways and public rights of way as well as accessible green space in urban fringes.

**What additional purpose can they serve ?,** Walking, cycling or horse riding, Leisure purposes or travel Opportunities for wildlife migration

### Information from Fairford Town Council