

1a

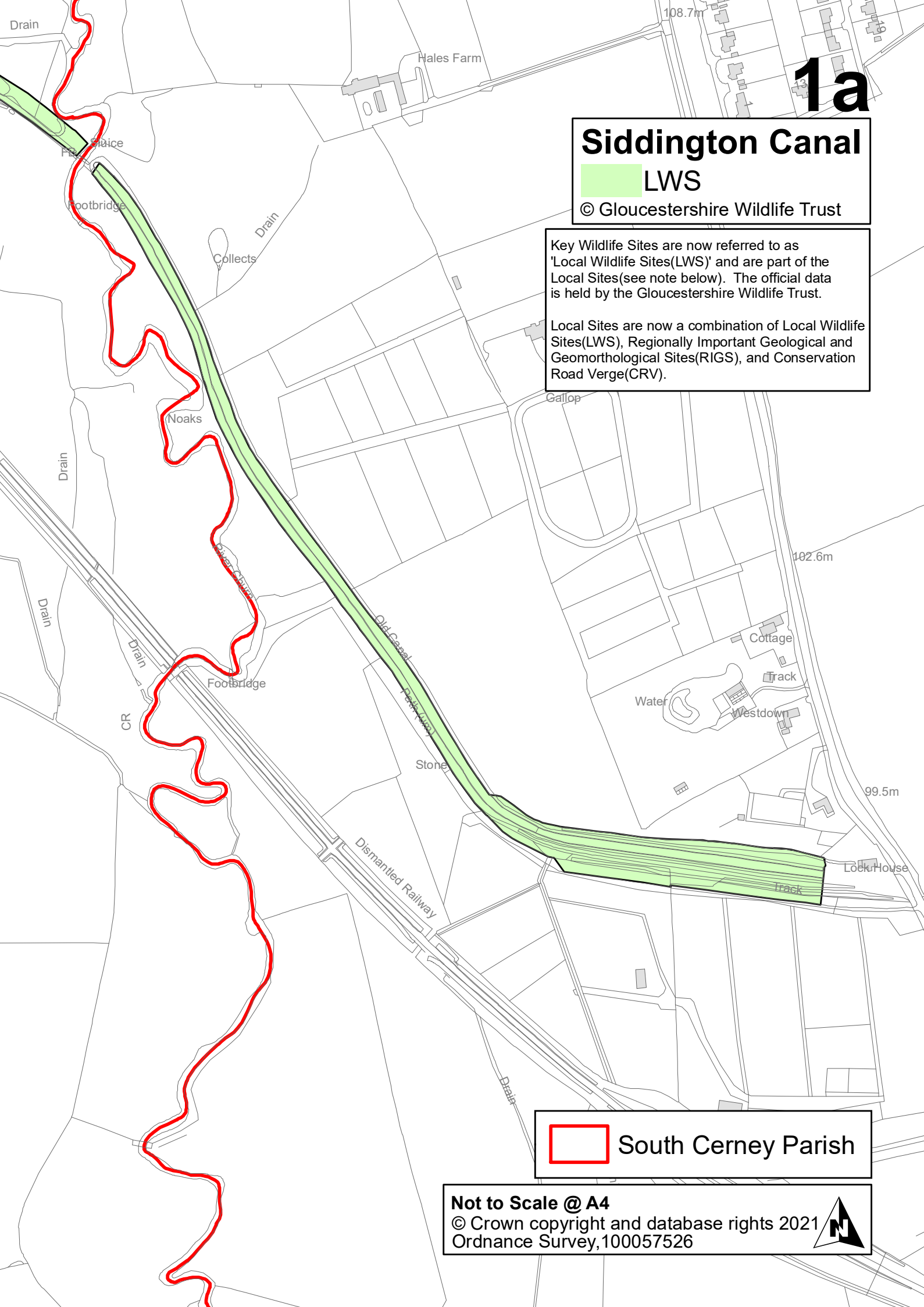
Siddington Canal

 LWS

© Gloucestershire Wildlife Trust

Key Wildlife Sites are now referred to as 'Local Wildlife Sites(LWS)' and are part of the Local Sites(see note below). The official data is held by the Gloucestershire Wildlife Trust.

Local Sites are now a combination of Local Wildlife Sites(LWS), Regionally Important Geological and Geomorphological Sites(RIGS), and Conservation Road Verge(CRV).



South Cerney Parish

Not to Scale @ A4

© Crown copyright and database rights 2021
Ordnance Survey, 100057526

