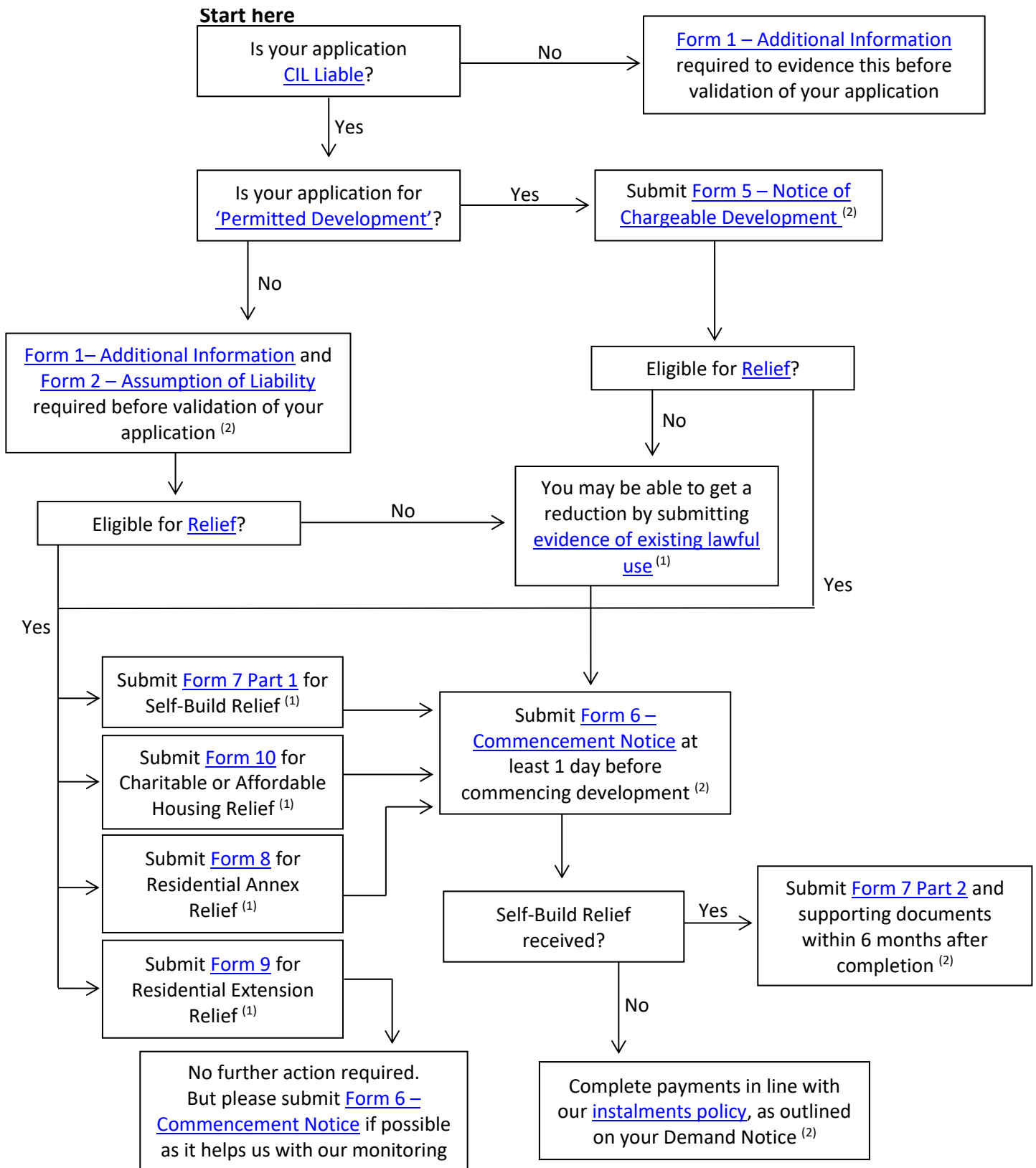




# CIL Process Flowchart

Please find below a flowchart of the CIL process for standard applications. Only applications that create floorspace need to go through this process. Note that large developments might require additional information like phasing plans etc.



<sup>(1)</sup> This can be submitted during the application process or within 28 days of receiving your Liability Notice which will be sent to you shortly after receiving planning permission.

<sup>(2)</sup> Failure to do so might result in surcharges and/or loss of reliefs.