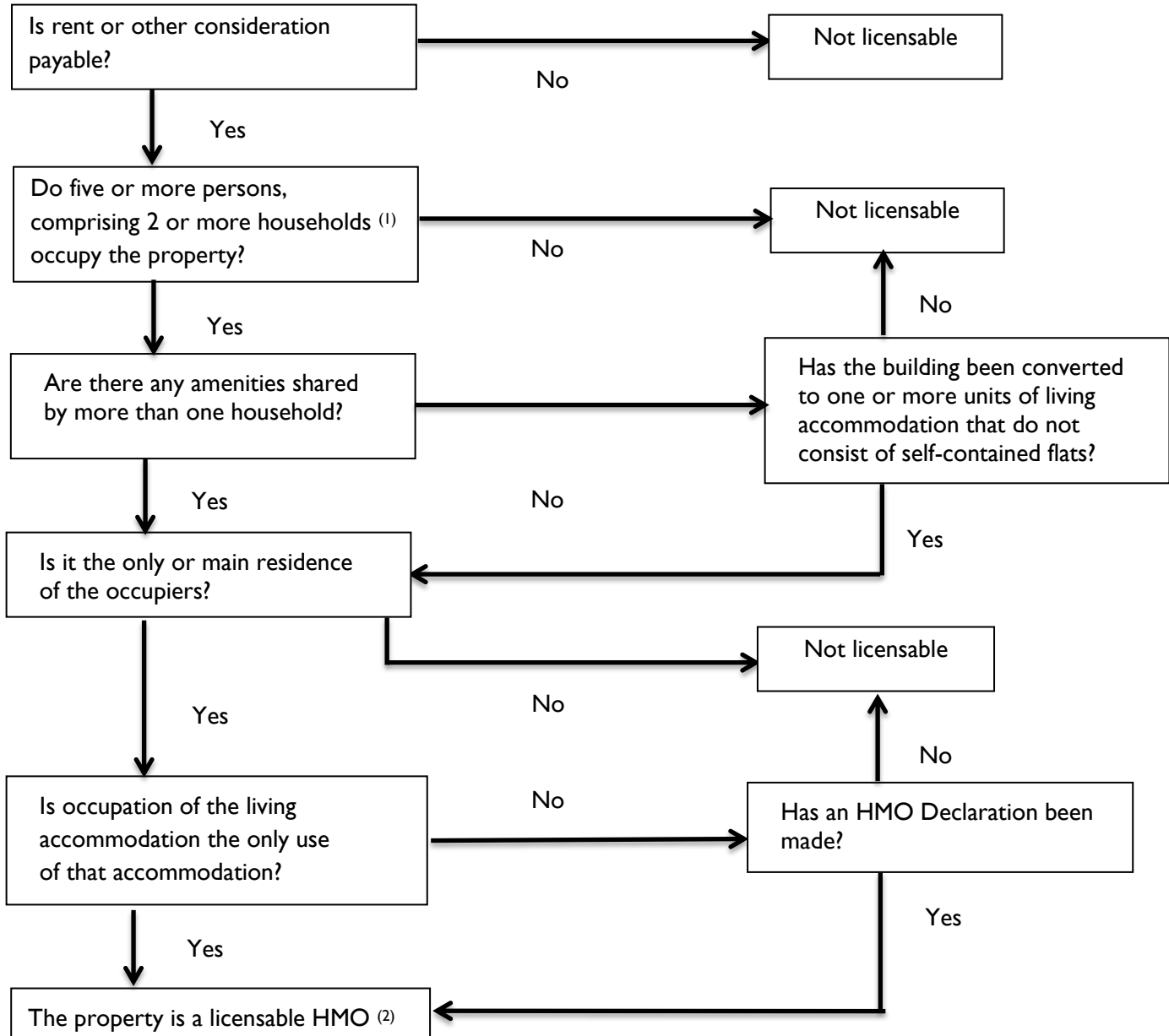




## HMO Mandatory Licensing



<sup>(1)</sup> a household is defined as 2 or more persons who are members of the same family, i.e. they are married or co-habiting, regardless of their sex or one of them is the parent, grandparent, child, stepchild, foster child (under the Fostering Services Regulations 2002), grandchild, brother, sister, uncle, aunt, nephew, niece or cousin of the other). An employee living in the same household as their employer may be considered part of a single household – refer to the Operational Services Team for further advice.

<sup>(2)</sup> The definition of a household is subject to exemptions identified in [Schedule 14 of the Housing Act 2004](#).

### Contact the Operational Services Team:

- 01285 623000
- [ers@publicagroup.uk](mailto:ers@publicagroup.uk)
- Operational Services, Environmental & Regulatory Services, Cotswold District Council, Trinity Road, Cirencester, Gloucestershire, GL7 1PX